

Ethernet Patch Panels

Category 5e+ Component Level Patch Panels

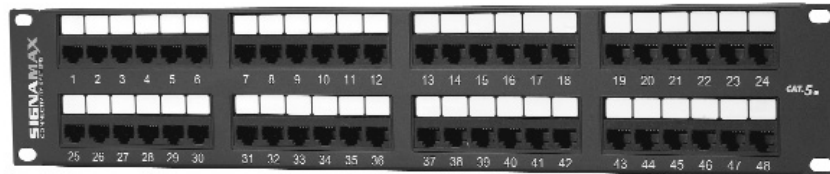
Category 5e+ patch panels are designed to exceed TIA/EIA-568-B.2 component, permanent link and channel level performance specifications providing usable bandwidth beyond 155 MHz. These high-density panels are available in 12 through 96 port versions and feature enhanced front and rear labeling features for easy circuit identification. Category 5e+ panels support both T568A and T568B wiring configurations using an easy to read color-coded wiring label.

Panels are constructed for maximum strength and durability and feature a fully enclosed, 6-port modular design, which provides flexibility and protection of printed circuitry during termination. Rear termination is made quick and easy using a 4-pair inline 110 type connector compatible with standard multi-pair impact tool to reduce installation time or single position 110 or Krone termination tool.

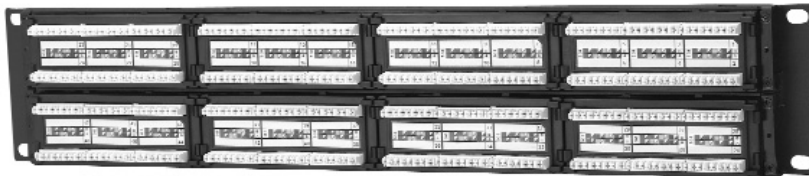
Panels include an integrated cable management feature for cable routing and strain relief requirements. An optional cable management bar, which mounts easily to the back of the panel, is available for improved cable routing and strain relief.



24458MD-C5E



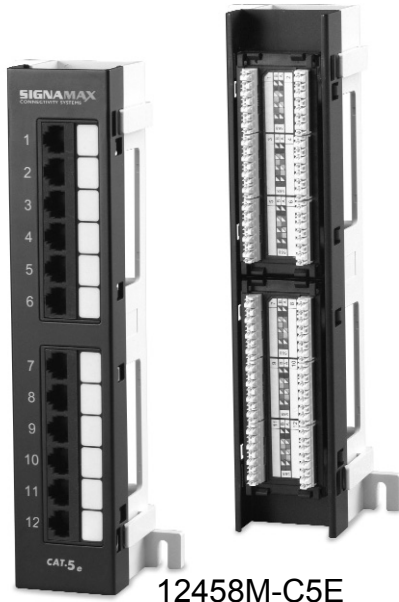
48458MD-C5E



PART NO.	DESCRIPTION
12458MD-C5E	12-Port Category 5e+ Patch Panel, T568A/B Wiring, 1.75" High
24458MD-C5E	24-Port Category 5e+ Patch Panel, T568A/B Wiring, 1.75" High
48458MD-C5E	48-Port Category 5e+ Patch Panel, T568A/B Wiring, 3.50" High
96458MD-C5E	96-Port Category 5e+ Patch Panel, T568A/B Wiring, 7.00" High
SMB-350	Panel Mount Cable Management Bar, 3.5" Deep

Signamax CAT-5e Patch Panels

Category 5e+ Component Level Mini Patch Panels



12458M-C5E

Mini Patch Panels are available in 12-port size and are ideal for installations where space is at a premium and open bay racks cannot be used. Panels are designed to exceed TIA/EIA-568-B.2 component level specifications and include port numbering, write-on labeling areas and are compatible with both T568A and T568B wiring configurations. Panels are provided mounted to either an 89D bracket or in a hinged version, both of which allow for easy access to the back of the panel for termination to 110 connectors.



12458M-C5E-A

12458MH-C5E

PART NO.	DESCRIPTION
12458M-C5E	12-Port Category 5e+ Mini Panel w/89D Bracket, T568A/B Wiring
12458M-C5E-A	12-Port Category 5e+ Angled Mini Panel w/89D Bracket, T568A/B Wiring
12458MH-C5E	12-Port Category 5e+ Mini Hinged Panel, T568A/B Wiring

Category 5e+ Component Level Shielded Patch Panels



24458S-C5E

Category 5e+ Shielded Modular Patch Panels provide a fully shielded design for cabling applications using 4-pair screened twisted-pair cables. Signamax shielded 110 patch panels are high-density panels, with a removable cover for EMI and RFI protection and allows for easy access to 110 terminations. Shielded panels are engineered to exceed TIA/EIA-568-B.2 component level specifications.

PART NO.	DESCRIPTION
24458S-C5E	24-Port Category 5e+ Shielded Patch Panel, T568A/B Wiring, 1.75" High