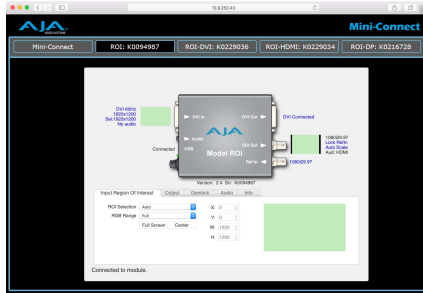


Mini-Connect

Ethernet to USB Converter



Computer Requirements

Mini-Connect has been tested to work with the following operating systems:

- Windows 7, 8, 10
- Mac OSX 10.10, 10.11

and the following browsers:

- Chrome
- Safari
- Firefox
- Microsoft Edge
- Internet Explorer

Features

- Control all AJA ROI Mini-Converters. (ROI, ROI-HDMI, ROI-DVI, ROI-DP)
- Control and configure up to four connected Mini-Converters.
- Network settings include static IP address and DHCP.
- Network discovery using Bonjour (Mac OS devices) and Universal Plug and Play (Windows devices)
- Uses universal input +5V power supply AJA model DWP-U-R1 (included)
- 5-year warranty

Mini-Connect enables control of up to four AJA ROI USB-enabled Mini-Converters over a single Ethernet connection. Mini-Connect integrates with your existing Ethernet network to provide easy access using any web browser on any platform for easy configuration and control of ROI Mini-Converters anywhere in your facility.

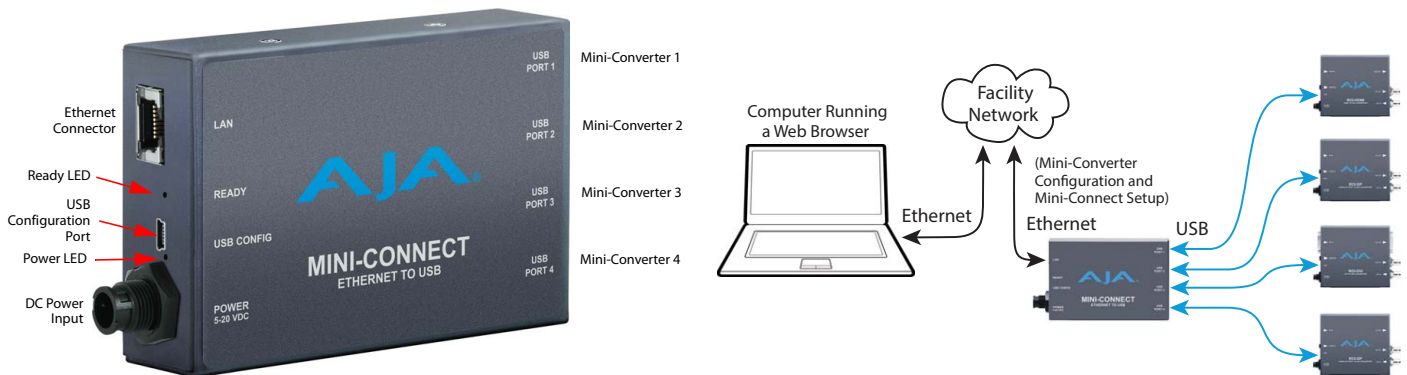
The Mini-Connect product consists of the hardware Mini-Connect, Mini-Connect web server and firmware residing on the Mini-Connect, and AJA's eMini-Setup application that runs on either Windows or Mac OSX.

Mini-Connect serves webpages permitting communications and control via computer over a network. You can access Mini-Converter User Interface screens (similar to those used by AJA's Mini-Config application) to control each of the connected Mini-Converters. The separate eMini-Setup application that runs on either Windows or Mac OS is used to communicate with and configure Mini-Connect directly via USB. The eMini-Setup application does not communicate with down stream Mini-Converters.

Mini-Connect's network configuration (IP address, DHCP, etc.) and firmware updates can be accomplished using either the Ethernet connection or a direct USB connection and AJA's eMini-Setup application. Operational configuration of Mini-Converters connected to Mini-Connect can be controlled via Ethernet, but their firmware cannot be updated via Ethernet.

The eMini-Setup application is only used to setup Mini-Connect, and cannot be used to connect to or setup attached Mini-Converters.

Mini-Connect Ethernet to USB Converter



Supported AJA Mini-Converters

- ROI, ROI-DVI, ROI-HDMI, ROI-DP, Others TBD*
- *NOTE: Future Software Release

Network Interface

- 10/100/1000 Ethernet (RJ-45)
- Embedded web server for remote control via Mini-Connect
- Configuration and transport control via web interface

USB Configuration

- Configuration and device control via web based UI

USB (interface with ROI converters)

- Connect up to 4 ROI Mini-Converters for control via Ethernet

User Interface

- Web based UI running Mini-Connect software

Size (w x d x h)

- 4.6" x 2.4" x 1.0" (109mm x 78mm x 25mm)

Power

- Uses AJA power supply model DWP-U-R1, included with purchase
- 100-240V, 50/60 Hz Universal Input
- +5 to 20V DC regulated, 8 watts max

Environment

- Safe Operating Temperature: 0 to 40 degrees C (32 to 104 degrees F)
- Safe Storage
- Operating Relative Humidity: 10-90% noncondensing
- Operating Altitude: <3,000 meters (<10,000 feet)