



VidiPlay

Complete End-to-End IPTV Solutions

VidiPlay™ is part of ATX's complete end-to-end IPTV solutions for local or private IP networks.

The system can include IP set-back boxes & Smart TV clients to deliver IP video to large format displays (TVs) as well as clients for PCs, tablets & mobile devices. VidiPlay also manages client authentication & access control, provides client UI customization and supports advanced features such as an interactive program guide (IPG), video on demand (VOD), network personal video recording (nPVR), digital signage & more.

VidiPlay uses ATX's award winning hardware such as gateways for live TV content ingest, encoders for local content and transcoders for additional video processing to build a comprehensive channel lineup for the local network. The VidiPlay IPTV solution adds many advanced features for content viewing & control.

VidiPlay™ PC Client

- ▶ Middleware Client that works with Amino, LG & Android set-back boxes
- ▶ Live television playback
- ▶ Support for Emergency Alert Messaging
- ▶ Employee messaging
- ▶ Support for multiple encryption schemes
- ▶ Promotions after power on
 - ▶ Image, animation, video or channel
 - ▶ Text overlay, background audio
- ▶ IPG & Portal options
 - ▶ IPG only
 - ▶ Customizable background & logo
 - ▶ Integration with major guide data providers
 - ▶ Channel insertion
 - ▶ Portal
 - ▶ Customizable main & sub menus
 - ▶ Background image, logo, icons & menus
 - ▶ Features including VOD, recordings & information are accessible from one location



Figure 1: VidiPlay Set-back Box Main Menu

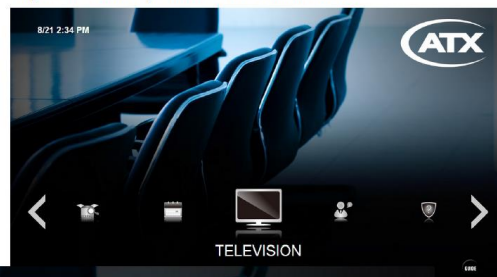


Figure 2: VidiPlay Set-back Box IPG

VidiPlay Complete End-to-End IPTV Solutions

VidiPlay™ PC Client

- ▶ Middleware client for Laptops or PCs
- ▶ Customizable user interface
- ▶ Live television playback
 - ▶ Expand to full screen
 - ▶ Closed captioning support
 - ▶ IPG support
- ▶ Multichannel viewer
- ▶ View up to 16 channels simultaneously

Figure 3: VidiPlay PC Client

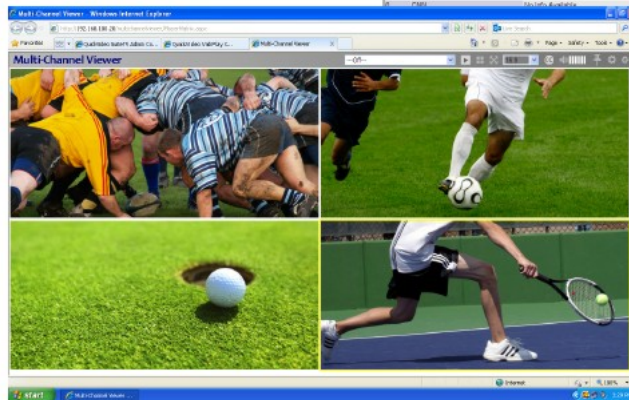
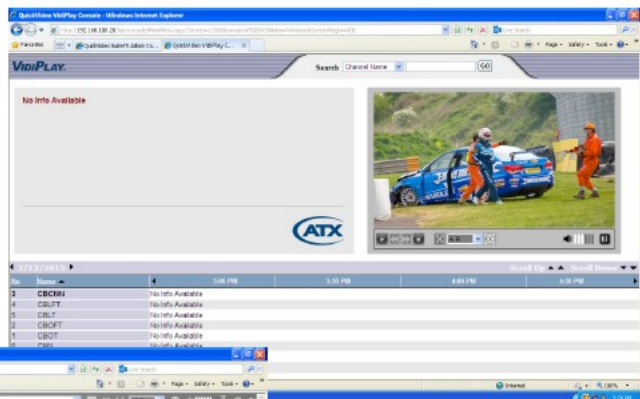


Figure 4: VidiPlay Multichannel Viewer

VidiPlay™ Admin Console

- ▶ Middleware server for Administrator
- ▶ Set-up channels
 - ▶ Set-up channel lists, category & programs
 - ▶ Remotely tune clients
 - ▶ Reboot/reimage clients
- ▶ Set-up access control
- ▶ Set-up access control for users & groups
 - ▶ Reboot/reimage clients
- ▶ Generate usage reports



Figure 5: VidiPlay Admin Console