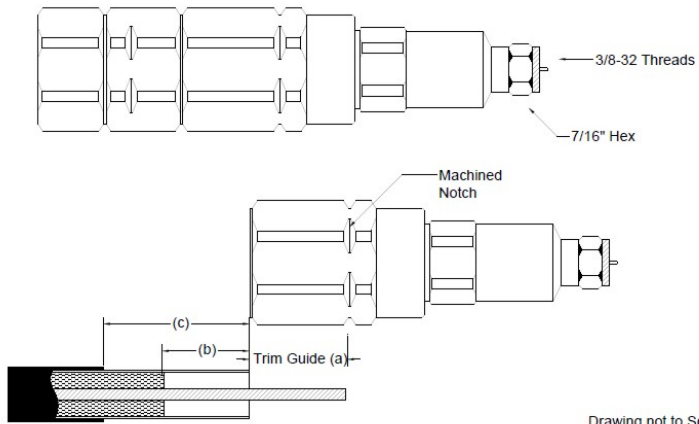


# ACC-15AFMT10U Flexfeeder to F Male Connector



**TX15 Flexfeeder to F Male Connector**  
**Hardline Product Group**  
**3 - Piece**  
**Truly Non-Rotational Design**  
**Positive Stop Installation**  
**SCTE Compliant**  
**Inner Conductor Trim Guide**

Drawing not to Scale

Material	
Connector Body	Aluminim - 6262 Alloy
Interface Contacts	Brass - Alloys QQQ-B-626
Insulators	Thermally Stable Plastics
O Rings	Ethylene Propylene
Environmental	
Operating Temperature	-40°C to +60°C
Corrosion , Minimum	Bellcore GR-2846-CORE, ATM B117 - 336 Hours
Mechanical	
Standard 5/8-24 UNEF and 3/8-32 Threads	
Mating Cable Retention, lbf (N)	500 (2,224)
Electrical Specifications	
Impedance	75 $\nabla$ 2 $\Omega$
Return Loss @ 1 GHz	-30 dB min
Insertion Loss @ 1 GHz	0.20 dB max
Cable Prem Dimensions	
Inner Conductor Length (a)	1.000 inches / 25.40 mm
Outer Conductor Exposed	0.25 inches / 6.35 mm