



SOLUTIONS FOR ALL YOUR APPLICATIONS

Stock No.
6384B
User Manual

HDE-CHV-QAM/IP

Single Channel MPEG-2 HD Encoder

1xComponent/HDMI/VGA/Composite Inputs

1xQAM + 1xIP Outputs

Status	Date	Document No.	Issue No.	Author
ACTIVE	April 26, 2016	651238300A	1	MB

We recommend that you write the following information in the spaces provided below.

Purchase Location Name:
Purchase Location Telephone Number:
HDE-CHV-QAM/IP Serial Number:

The information contained herein is subject to change without notice. Revisions may be issued to advise of such changes and/or additions.

Correspondence regarding this publication should be addressed directly to:

Blonder Tongue Laboratories, Inc.
One Jake Brown Road
Old Bridge, NJ 08857 USA

Document Number: 651238300A

Printed in the United States of America.

All product names, trade names, or corporate names mentioned in this document are acknowledged to be the proprietary property of the registered owners.

This product incorporates copyright protection technology that is protected by U.S. patents and other intellectual property rights. Reverse engineering or disassembly is prohibited.

Table of Contents

SECTION 1 – GENERAL & SAFETY INSTRUCTIONS	4
SECTION 2 – PRODUCT SUMMARY	6
2.1 REVISION HISTORY & REASON.....	6
2.2 PRODUCT APPLICATION & DESCRIPTION	6
2.3 PRODUCT SPECIFICATION	9
SECTION 3 – INSTALLATION & POWER-UP	10
3.1 UNPACKING	10
3.2 INSTALLATION	10
3.3 POWER-UP.....	10
SECTION 4 – COMMUNICATING WITH THE UNIT	11
SECTION 5 – CONFIGURING THE UNIT	12
5.1 ACCESSING THE UNIT VIA THE WEB BROWSER	12
5.2 "MAIN > STATUS" SCREEN	13
5.3 "MAIN > VIDEO" SCREEN.....	14
5.4 "MAIN > AUDIO" SCREEN	16
5.5 "MAIN > TS CONFIG" SCREEN.....	18
5.6 "MAIN > IP" SCREEN	20
5.7 "MAIN > QAM" SCREEN.....	21
5.8 "MAIN > OUTPUT" SCREEN	22
5.9 "MAIN > REFRESH" TAB	23
5.10 "NETWORK" SCREEN	23
5.11 "ADMIN" SCREEN.....	24
5.12 "TIME" SCREEN.....	27
5.13 "EVENT LOG" SCREEN	28
APPENDIX A – VIEWING THE IP OUTPUT ON A VLC MEDIA PLAYER	29

Section 1 — General & Safety Instructions



The STOP sign symbol is intended to alert you to the presence of REQUIRED operating and maintenance (servicing) instructions that if not followed, may result in product failure or destruction.



The YIELD sign symbol is intended to alert you to the presence of RECOMMENDED operating and maintenance (servicing) instructions.



The LIGHTNING flash symbol is intended to alert you to the presence of uninsulated "dangerous voltage" within the product's enclosure that may be of sufficient magnitude to constitute a risk of electrical shock.

**TO REDUCE THE RISK OF ELECTRICAL SHOCK, DO NOT REMOVE COVER FROM THIS UNIT.
NO USER-SERVICEABLE PARTS INSIDE. REFER SERVICING TO QUALIFIED SERVICE PERSONNEL.**

WARNING: TO PREVENT FIRE OR SHOCK HAZARD, DO NOT EXPOSE THIS UNIT TO RAIN OR MOISTURE

NOTE TO CATV SYSTEM INSTALLER

This reminder is provided to call the CATV System Installer's attention to Article 820-40 of the NEC that provides guidelines for proper grounding and, in particular, specifies that the cable ground shall be connected to the grounding system of the building, as close to the point of cable entry as practical.

Safety Instructions

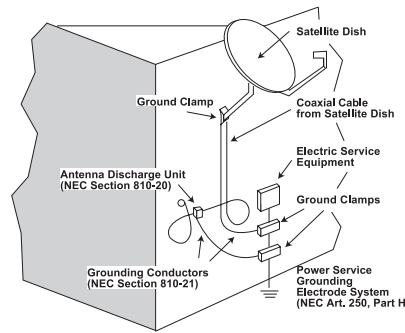


**YOU SHOULD ALWAYS FOLLOW THESE INSTRUCTIONS TO HELP ENSURE
AGAINST INJURY TO YOURSELF AND DAMAGE TO YOUR EQUIPMENT.**

- Elevated Operating Ambient - If installed in a closed or multi-unit rack assembly, the operating ambient temperature of the rack environment may be greater than room ambient. Therefore, consideration should be given to installing the equipment in an environment compatible with the maximum ambient temperature per Section 2.3.
- Reduced Air Flow - Installation of the equipment in a rack should be such that the amount of air flow required for safe operation of the equipment is not compromised.
- Mechanical Loading - Mounting of the equipment in the rack should be such that a hazardous condition is not achieved due to uneven mechanical loading.
- Circuit Overloading - Consideration should be given to the connection of the equipment to the supply circuit and the effect that overloading of the circuits might have on overcurrent protection and supply wiring. Appropriate consideration of equipment nameplate ratings should be used when addressing this concern.
- Reliable Earthing - Reliable earthing of rack-mounted equipment should be maintained. Particular attention should be given to supply connections other than direct connections to the branch circuit (e.g. use of power strips).
- Read all safety and operating instructions before you operate the unit.
- Retain all safety and operating instructions for future reference.
- Heed all warnings on the unit and in the safety and operating instructions.

Safety Instructions - continued

- Follow all installation, operating, and use instructions.
- Unplug the unit from the AC power outlet before cleaning. Use only a damp cloth for cleaning the exterior of the unit.
- Do not use accessories or attachments not recommended by Blonder Tongue, as they may cause hazards, and will void the warranty.
- Do not operate the unit in high-humidity areas, or expose it to water or moisture.
- Do not place the unit on an unstable cart, stand, tripod, bracket, or table. The unit may fall, causing serious personal injury and damage to the unit. Install the unit only in a mounting rack designed for 19" rack-mounted equipment.
- Do not block or cover slots and openings in the unit. These are provided for ventilation and protection from overheating. Never place the unit near or over a radiator or heat register. Do not place the unit in an enclosure such as a cabinet without proper ventilation. Do not mount equipment in the rack space directly above or below the unit.
- Operate the unit using only the type of power source indicated on the marking label. Unplug the unit power cord by gripping the plug, not the cord.
- The unit is equipped with a three-wire ground-type plug. This plug will fit only into a ground-type power outlet. If you are unable to insert the plug into the outlet, contact an electrician to replace the outlet. Do not defeat the safety purpose of the ground-type plug.
- Route power supply cords so that they are not likely to be walked on or pinched by items placed upon or against them. Pay particular attention to cords at plugs, convenience receptacles, and the point where they exit from the unit.
- Be sure that the outdoor components of the antenna system are grounded in accordance with local, federal, and National Electrical Code (NEC) requirements. Pay special attention to NEC Sections 810 and 820. See the example shown in the following diagram:



- We strongly recommend using an outlet that contains surge suppression or ground fault protection. For added protection during a lightning storm, or when the unit is left unattended and unused for long periods of time, unplug it from the wall outlet and disconnect the lines between the unit and the antenna. This will prevent damage caused by lightning or power line surges.
- Do not locate the antenna near overhead power lines or other electric light or power circuits, or where it can fall into such power lines or circuits. When installing the antenna, take extreme care to avoid touching such power lines or circuits, as contact with them can be fatal.
- Do not overload wall outlets or extension cords, as this can result in a risk of fire or electrical shock.
- Never insert objects of any kind into the unit through openings, as the objects may touch dangerous voltage points or short out parts. This could cause fire or electrical shock.
- Do not attempt to service the unit yourself, as opening or removing covers may expose you to dangerous voltage and will void the warranty. Refer all servicing to authorized service personnel.
- Unplug the unit from the wall outlet and refer servicing to authorized service personnel whenever the following occurs:
 - The power supply cord or plug is damaged;
 - Liquid has been spilled, or objects have fallen into the unit;
 - The unit has been exposed to rain or water;
 - The unit has been dropped or the chassis has been damaged;
 - The unit exhibits a distinct change in performance.
- When replacement parts are required, ensure that the service technician uses replacement parts specified by Blonder Tongue. Unauthorized substitutions may damage the unit or cause electrical shock or fire, and will void the warranty.
- Upon completion of any service or repair to the unit, ask the service technician to perform safety checks to ensure that the unit is in proper operating condition.

Returning Product for Repair (or Credit)

A Return Material Authorization (RMA) Number is required on all products returned to Blonder Tongue, regardless if the product is being returned for repair or credit. Before returning product, please contact the Blonder Tongue Service Department at 1-800-523-6049, Ext. 4256 or visit our website: www.blondertongue.com for further information.

Section 2 — Product Summary

2.1 Revision History & Reason

This is the first issue of the Instruction Manual for HDE-CHV-QAM/IP. This unit is new and replaces the HDE-CHV-QAM (#6384A).

2.2 Product Application & Description

Application:

HDE-CHV-QAM/IP (MPEG-2 HD Encoder – 1xComponent/HDMI/VGA/Composite – 1xQAM/1xIP) accepts one (1) high-definition (HD) program from any of the following inputs: 1xComponent, 1xHDMI (unencrypted), 1xVGA, and 1xComposite. MPEG-2 encoded outputs are available in the following formats simultaneously: 1xQAM and 1xIP (100/1000Base-T Ethernet). The QAM RF output is frequency agile over the entire CATV frequency range of 5 to 1002 MHz (channels T7 to T14, 2 to 158) with an output level of +40 dBmV.

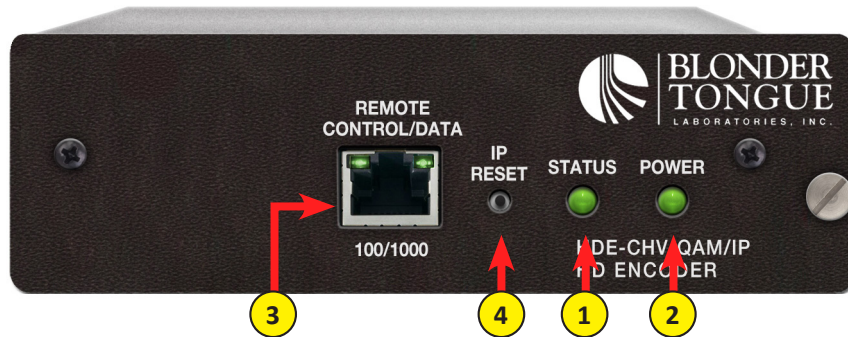
The encoder supports Dolby® Digital audio encoding, and Closed Captioning (EIA-608). Comprehensive remote monitoring and control is accomplished using any standard Web browser via a front-panel 100/1000Base-T Ethernet connection. A rear-panel VGA output port is available for loop-through applications.

Features:

- Accepts one (1) program from any of the following inputs: 1xComponent, 1xHDMI (unencrypted), 1xVGA, and 1xComposite
- Simultaneously delivers the following outputs: 1xQAM and 1xIP
- Provides +40 dBmV QAM RF output level
- Full QAM output channel coverage from 5 to 1002 MHz (T7 to 158)
- Provides comprehensive GUI-based monitoring and control via standard Web browsers
- Compact design permits installation of up to 3 Encoder modules in 1RU
- Supports Real-time Dolby® Digital audio encoding
- Supports user-defined PSIP configuration
- Supports Closed Captioning EIA-608

Description:

Front Panel connectors and indicators :



1 STATUS LED:

LED indicates the status of input video and audio as follows:

LED is Green = Both Video and Digital Audio inputs are present.

LED is Red = Either the Video or Digital Audio is not present, or internal temperature is too high.

Note: The encoder does not sense analog audio inputs. Therefore, if the Audio is set for Analog, the status indicator will only be valid for video.

2 POWER:

LED is Green = AC power is detected.

LED is Off = indicates (i) AC power is not connected, or (ii) AC power is connected but the power supply or encoder is defective. The unit must be sent to Blonder Tongue for repair for condition (ii).

3 REMOTE CONTROL/DATA 100/1000:

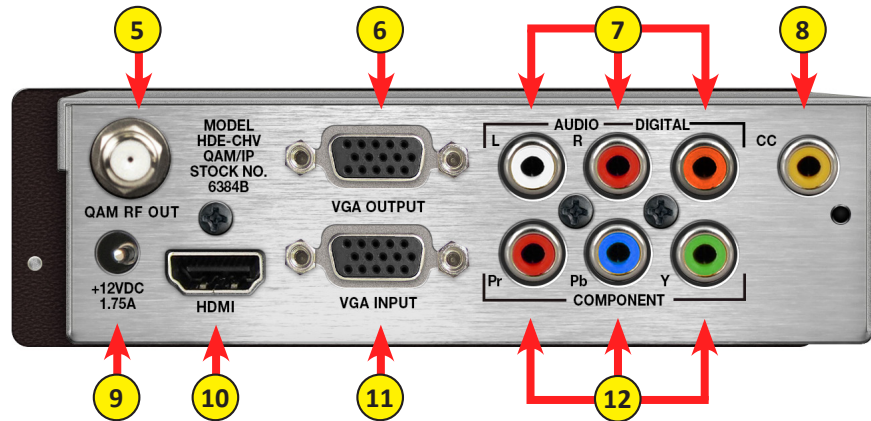
RJ45 connector for 100/1000Base-T Ethernet interface for monitoring and configuring the unit. The same interface is used to deliver the IP output. Only static IP address can be assigned to this interface. (Factory Default: "172.16.70.1")


4 IP RESET:

When pressed for >10 seconds, the IP address of the control port will be enabled to the default factory IP address (172.16.70.1, **Subnet Mask** 255.255.0.0). The login credentials will also be enabled to the default username **Admin** and password **pass**, which are both case-sensitive.

Note: The old IP address, login, and password will still be present in the encoder settings. To clear the reset mode simply reboot the encoder.

Rear Panel connectors:



- 5 QAM RF OUTPUT:**
“F” connector for QAM output.
 - 6 VGA OUTPUT:**
DE-15 female connector for loop-through VGA output.
 - 7 AUDIO:**
RCA connectors (marked L and R) for Analog Left/Right Audio input and RCA connector (marked “DIGITAL”) for Digital Audio program input.
 - 8 CC:**
RCA connector (marked “CC”) for Analog NTSC Closed Captioning (EIA-608, also known as Line 21), which will then be digitized and inserted in the MPEG-2 Transport Stream of the Component, HDMI, and VGA inputs.
 - 9 INPUT POWER:**
ITE power supply - rated 115-230VAC / Output 12VDC @ 3 Amp.
 - 10 HDMI:**
HDMI connector for unencrypted HDMI input.
- 

THE UNIT DOES NOT ACCEPT HDCP-ENCRYPTED HDMI INPUT.
- 11 VGA INPUT:**
DE-15 female connector for VGA input.
 - 12 COMPONENT:**
RCA connectors (marked Pr, Pb, Y) for Analog Component Video input. The RCA connector (marked Y) is also used for Composite Video input.

2.3 Product Specification

Input

Component	Connectors: 3x RCA for Video (Y, Pb, Pr) Video Resolution: 480i, 720p, & 1080i Video Aspect Ratio: 4:3 & 16:9 Audio: 2x RCA for Analog Audio (L, R) 1x RCA for Digital Audio (PCM)
HDMI	Connector: 1x HDMI Video Resolution: 480i, 720p, & 1080i HDCP Encryption: Not supported Audio: Embedded PCM & pass-through Dolby® Digital only
VGA	Connectors: 2x Female VGA (Input + Loop-through Output) Video Resolution: 640x480 @ 60 fps 800x600 @ 60 fps 1024x768 @ 60 fps Audio: 2x RCA for Analog Audio (L, R) 1x RCA for Digital Audio (PCM)
Composite	Connectors: 1x RCA for Video (Y) Video Resolution: 480i Audio: 2x RCA for Analog Audio (L, R) 1x RCA for Digital Audio (PCM)

Encoding Profile	
Video	Output Format: MPEG-2 HD MP@ML; ISO 13818-2 Chroma: 4:2:0 Resolution: 480i, 720p, & 1080i Frame rate: 29.97 fps (480i); 29.97 fps (1080i); 59.97 fps (720p) Aspect Ratio: 4:3 & 16:9 GOP Structure: I & P frames (user-selectable) Transport Rate: Variable (user-selectable) Video Bit Rate: Variable (user-selectable) Video Pre-filter: Variable (user-selectable) Color Space: YCbCr and RGB
Audio	Output Format: Dolby® Digital Sampling rate: 48 kHz Bit rate: Variable; 96 - 448 Kbps (user-selectable)
Closed Captioning	Component: EIA-608; 1x RCA (CC) HDMI: EIA-608; 1x RCA (CC) VGA: EIA-608; 1x RCA (CC) Composite: EIA-608

Output

QAM	Connector: 1x "F" Female (Rear-panel) Modulation: QAM 16, 32, 64, 128, and 256 Standards: ITU-T J.83; Annex A and B DVB Symbol Rate: Variable; up to 7 MSymbol/sec (MBaud) Frequency Range: 5 to 1002 MHz Tuning: CATV Channel Selectable (Ch. T7 to T14, 2 to 158) Channels' Bandwidth: 6 MHz RF Level: +40 dBmV ±1 dB RF Level Adjustment: +35 to +42 dBmV, 1 dB increment Frequency Tolerance: ± 0.5 kHz @ 77 °F (25 °C) Frequency Stability: ± 5 kHz over 32 to 122 °F (0 to 50 °C) Amplitude Flatness: ± 0.25 dB (over 6 MHz channel) Phase Noise: -98 dBc (@ 10 kHz) Spurious: -60 dBc Broadband Noise: -70 dBc (@ +40 dBmV output level, 5.5 MHz bandwidth) Impedance: 75 Ω Spectral Inversion: Auto Recognition Carrier Suppression: 45 dB Return Loss: 14 dB typical Signal-to-Noise Ratio (SNR): 40 dB typical MER: 40 dB typical I/Q Phase Error: Less than 1 degree I/Q Amplitude Imbalance: Less than 1%
IP	Connector: 1x RJ45 (Front-panel) Standard: 100/1000Base-T Ethernet UDP/RTP: Supported (user-selectable)

General

Dimensions (W x D x H):	5.65 x 14.10 x 1.72 inches (143.5 x 358.1 x 43.7 mm)
Power:	External Power Supply (Input 115-230VAC / Output 12VDC @ 3 Amp)
Power Dissipation:	16 W
Weight (one module):	1.75 lbs (0.795 kg)
Operating Temperature:	32 to 122 °F (0 to 50 °C)
Storage Temperature:	-13 to 158 °F (-25 to 70 °C)
Operating Humidity:	0 to 95% RH @ 35 °C max, non-condensing
Storage Humidity:	0 to 95% RH @ 35 °C max, non-condensing

Alarms/Monitoring/Control

Local Monitoring:	1x Power LED 1x Status LED
Local Control:	1x IP Reset button
Remote Monitoring/Control:	GUI-based menu via standard Web browser (1x RJ45 front-panel connector; 100/1000Base-T, also used for IP output)

Section 3 – Installation & Power-up

3.1 Unpacking

You will find the following items in the box:

- HDE-CHV-QAM/IP Encoder (QTY=1)
- Switching Mode Power Supply, 12 VDC, 3.0A (Item: 515132200)
- A hardware bag (Item: 741021800) containing the following:
 - Seven-foot cross-pinned (cross-over) RJ45 Ethernet cable (QTY=1)

3.2 Installation

The HDE-CHV-QAM/IP encoder is designed to be installed in the HDE-3MCH Series rack chassis. The chassis can support 3 HDE-CHV-QAM/IP modules, each utilizing 2 standard single slots.

You can mount the chassis in a standard EIA, 24 inch (610 mm) deep, enclosed rack. Secure the rack chassis front panel to the rack by inserting four machine screws, with cup washers, through the four mounting holes in the front panel.

When installing one or more chassis in a headend rack, it is recommended to leave a 1 rack unit space (1.75" high) between units to maximize air flow, but it is not required.



**FOR SAFE AND RELIABLE OPERATION, THE GROUND PIN OF THE POWER CORD PLUG
MUST BE GROUNDED PROPERLY.**

3.3 Power-up

To power up the unit, connect the line cord to a 115/230 VAC outlet.

The "POWER" LED on the front-panel will light green.

Section 4 – Communicating with the Unit

Local or remote communication with the unit is only possible through a GUI-based menu via any standard web browser. Before you can communicate with the unit, you must configure the unit's IP address to conform with your existing IP network or LAN. To do so, follow these steps:

- 1) Plug one end of the Ethernet cross cable that is provided in the hardware bag to unit's front-panel RJ45 interface marked "**Remote Control/Data 100/1000**". Plug the other end of the cable to your computer.
- 2) The factory default IP address of the unit is **172.16.70.1**. To be able to communicate with the unit, you must first change your computer's IP address.

The following steps explain how to do this for a computer with **Windows 7, Windows 8.x or Windows 10** operating software:

- (a) On your computer, navigate to the "Network and Sharing Center".
(Note: this can be found using the search box in the Start Menu or for Windows 8.x, the Start Screen)
- (b) Once open, click on "Change Adapter Settings" on left hand side of the window.
- (c) Right-click on the "Local Area Connection", and then click on the "Properties".
- (d) A dialog box entitled "Local Area Connection Properties" will appear. In this box, double-click on the "Internet Protocol Version 4 (TCP/IPv4)".
- (e) A dialog box entitled "Internet Protocol Version 4 (TCP/IPv4) Properties" will appear. Select the "Use the following IP address" option and enter the following addresses:

IP address: **172.16.70.2**

Subnet mask: **255.255.255.0**

No need to enter a value for the Default Gateway.

Click OK to close the dialog box. Your computer is now ready to communicate with the unit.

- OR -

The following steps explain how to do this for a computer with **Windows XP** operating software:

- (a) On your computer, open the "Control Panel"
- (b) Double-click on "Network Connections"
- (c) Right-click on the "Local Area Connection", and then click on the "properties".
- (d) A dialog box entitled "Local Area Connection Properties" will appear. In this box, double-click on the "Internet Protocol (TCP/IP)".
- (e) A dialog box entitled "Internet Protocol (TCP/IP) Properties" will appear. Select the "Use the following IP address" option and enter the following addresses:

IP address: **172.16.70.2**

Subnet mask: **255.255.255.0**

No need to enter a value for the Default Gateway.

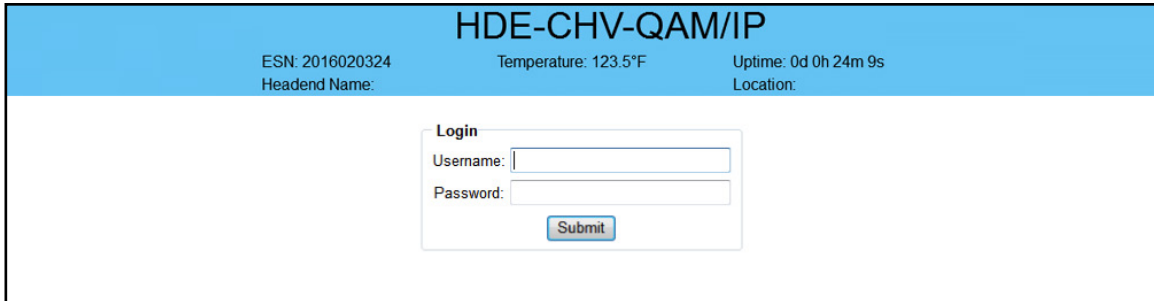
Click OK to close the dialog box. Your computer is now ready to communicate with the unit.

Section 5 - Configuring the Unit

5.1 Accessing the Unit Via the Web Browser

You must complete the steps described in Section 4 before proceeding as follows:

1) Open a web browser on your computer (Internet Explorer 7 or higher is recommended) and enter the following URL address (<http://172.16.70.1>). The "Login" Screen (Figure 5.1) will appear.



The screenshot shows a web browser interface for the HDE-CHV-QAM/IP unit. At the top, a blue header bar contains the title 'HDE-CHV-QAM/IP' and three columns of status information: 'ESN: 2016020324', 'Temperature: 123.5°F', and 'Uptime: 0d 0h 24m 9s'. Below the header, there is a 'Login' section with 'Username:' and 'Password:' input fields and a 'Submit' button.

Figure 5.1 - "Login" Screen

2) Enter the following case-sensitive factory-default Username and Password, and click on the "Submit" button.

NOTE: When logged in as Admin, the user has read and write permission. Only one Admin can be logged in at a time. When logged in as Guest, the user has only read permission. Up to four Guests can be logged in simultaneously.

Username = **Admin** (case-sensitive)
Password = **pass** (case-sensitive)

- OR -

Username = **Guest** (case-sensitive)
Password = **pass** (case-sensitive)

Monitoring and configuration of the unit is achieved via a series of web pages as described in the Sections below. The following read-only information is displayed in a "page header" – in blue color – on top of each web page:

ESN: unit's Serial number

Headend name: a user-defined field to make identification easier

Temperature: temperature of unit's chipset

Uptime: time elapsed since last time the unit was turned on

Location: a user-defined field to make identification easier

As shown in Figure 5.2, under the blue "page header" the following Primary tabs will appear:

- Primary tab "Main" includes the following sub-tabs: Status, Video, Audio, TS Config, IP, QAM, Output, and Refresh.
- Primary tab "Network" doesn't include any sub-tab.
- Primary tab "Time" doesn't include any sub-tab.
- Primary tab "Event Log" doesn't include any sub-tab.
- Primary tab "Logout" doesn't include any sub-tab.

Each Primary and sub-tab is described in the subsequent Sections

5.2 "Main > Status" Screen

The "Main > Status" screen (Figure 5.2) is a "read only" screen and displays the following information:

HDE-CHV-QAM/IP								
ESN: 2016020324		Temperature: 123.5°F		Uptime: 0d 0h 23m 4s		Location:		
Headend Name:								
Main	Network	Time	Event Log	Logout				Admin
Status	Video	Audio	TS Config	IP	QAM	Output	Refresh	
TS					Output			
① TS				② Bitrates		③ IP		④ QAM
TS				25.48 / 38.81				
100 (1) () (3-1)				25.25		IP (UDP://239.10.10.10:50000)		
101 V: Component (No Input Detected)				25.04		Ch. 70		
102 A: Analog				0.20				

Figure 5.2 - "Main > Status" Screen

In the section entitled "TS" under an orange header, the following parameters about the output are displayed:

- ① **TS:** indicates the selected program's information. The program information includes the PMT PID, Program number, Short Name, Major-minor channel number, Video elementary stream PID, Video input source, Audio elementary stream PID, and Audio input source.
- ② **Bitrates:** indicates the transport stream bitrate (see ② of Section 5.3 for details) and the TS Bitrate (see ② of Section 5.5 for details).

In the section entitled "Output" under the blue header, the following parameters about the output are displayed:

- ③ **IP:** indicates the encapsulation method, IP address, and the port number to which an output is assigned.
- ④ **QAM:** indicates the RF channel number of the QAM output.

5.3. "Main > Video" Screen

The "Main > Video" screen (Figure 5.3) is a "user-configurable" screen to select the video encoder parameters for the input program:

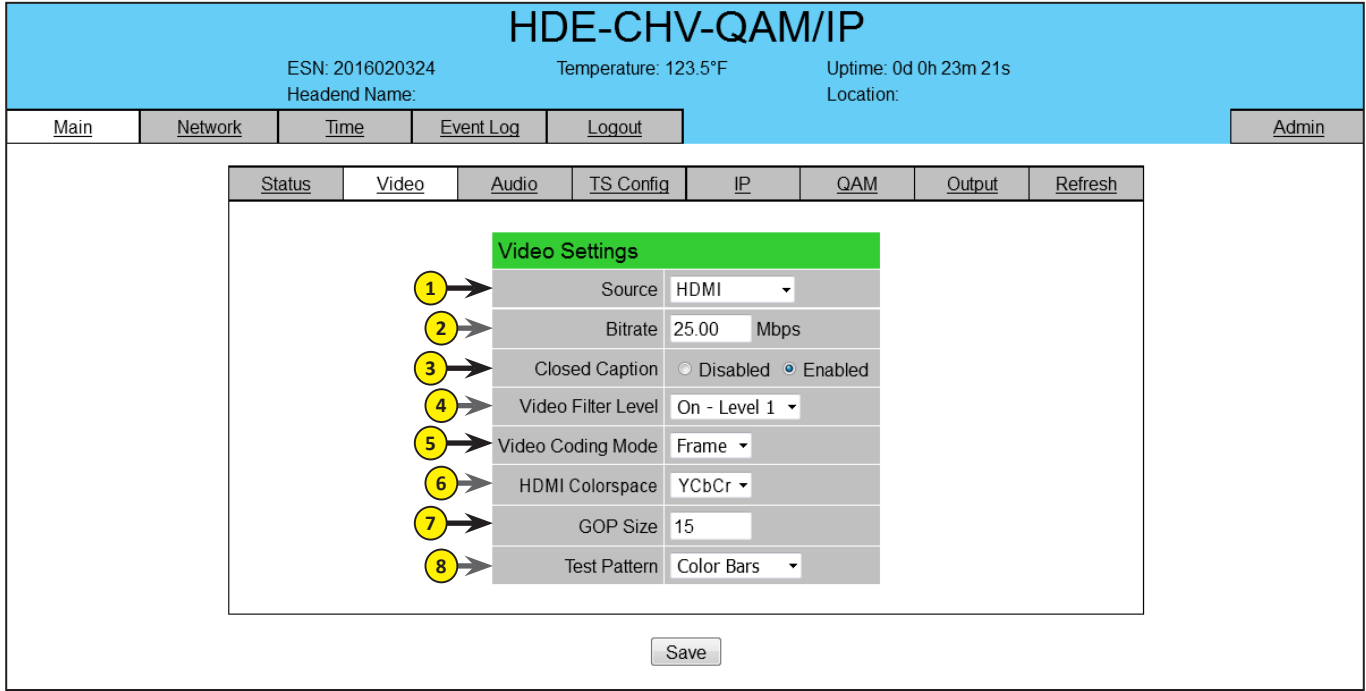


Figure 5.3 - "Main > Video" Screen

5.3 "Main > Video" Screen (continued)

- 1 **Source:** allows the user to select the type of the video input source. Options are: Composite, Component, VGA, and HDMI.
- 2 **Bitrate:** user must enter the bitrate for the input video. It is recommended that the bitrate of the input video does not exceed "TS Bitrate" selected on the "Main > TS Config" Screen (see 2 of section 5.5 for details).
- 3 **Closed Caption:** the process of passing the EIA-608 Closed Captioning (CC) information and displaying the CC text on television or other visual display. Options are Enabled and Disabled. (Factory Default: "Disabled")
- 4 **Video Filter Level:** a two-dimensional low-pass filter controlling the degree of which the input video is filtered. Options are: Off (no filtering), On-Level 1, On-Level 2, On-Level 3, and On-Level 4 (highest filtering coefficient). Level 1 filtering of the video will smoothen the sharp edges of the pixels and produce a softer image. The softer an image, the less number of bits required to encode the image at the quantizer level.
- 5 **Video Coding Mode:** user must select the Video Coding Mode. Options are: Frame and Field. (Factory Default: "Frame")
- 6 **HDMI Colorspace:** allows the user to select the color space of HDMI input source. Options are: RGB and YCbCr. (Factory Default: "RGB")

NOTE: If the displayed pictures are very green or violet in color, it is a good indication that this setting is incorrect.



Option 6 will be available only if "HDMI" is selected in 1 above.

- 7 **GOP Size:** the length between I-frames is known as the group of pictures (GOP) size. The range is 1 to 120 with 1 I-frame for every 14 non-I-frames. (Factory Default: "15")
- 8 **Test Pattern:** the video pattern that will be inserted into the transport stream if no input video is detected. Options are: Color Bars, Black Screen, Blue Screen, and Red Screen.



Remember to click on the SAVE button to apply the new values/configurations.

5.4 "Main > Audio" Screen

The "Main > Audio" screen (Figure 5.4) is a "user-configurable" screen where the following parameters associated with the Dolby® Digital encoded stereo audio are configured and displayed for the audio input under a green header:

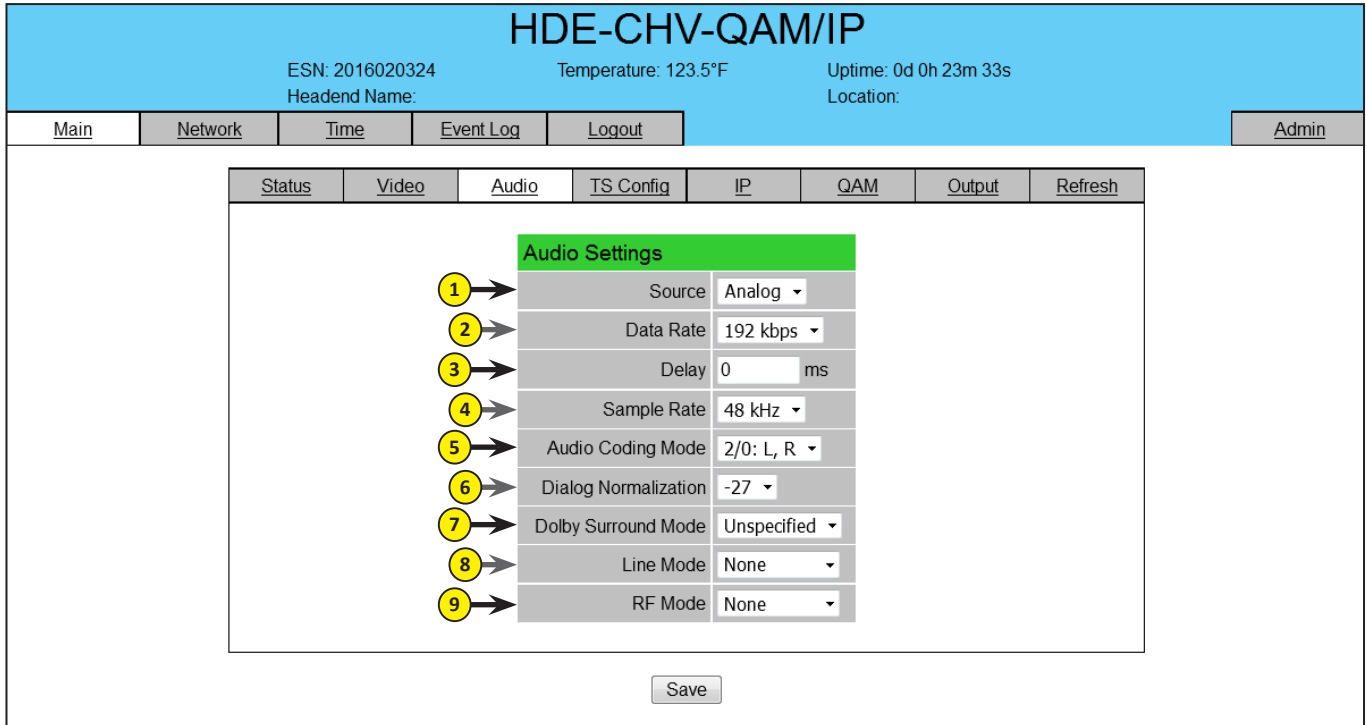


Figure 5.4 - "Main > Audio" Screen

- 1 **Source:** allows the user to select the type of audio input source. Options are: Analog, Digital, and HDMI.
- 2 **Data Rate:** allows the user to select the audio encoding bitrate in kbps (kilobits per second). The range is 96 to 448 kbps. The factory default value is 192 kbps which supports Audio Coding Mode 2/0:L, R.

NOTE: See Dolby Encoding guidelines for additional information.

- 3 **Delay:** allows the user to adjust the audio delay (-300 to 300 ms) to correct for input video/audio sync mismatch.
- 4 **Sample Rate:** indicates the input sampling rate of the encoder. The HDE-CHV-QAM/IP supports 48 kHz sampling rate.
- 5 **Audio Coding Mode:** also referred to as Channel mode. Indicates the number of main audio channels within the encoded bitstream and also indicates the channel format. The unit supports 2/0:L,R = audio is a dual channel (Left & Right).
- 6 **Dialog Normalization:** behaves as an Audio Automatic gain Control (AgC) or Dynamic Range Control (DRC). It has the ability to take different incoming audio levels and normalize them. The ability of the Dialog Normalization depends on the configuration of the Dynamic Range Control. The HDE-CHV-QAM/IP allows you to adjust the normalization from -1 to -31 dB. The typical value is -27 dB. This is based on the standard film audio formats which normally are between -25 and -31 dB.

- 7 **Dolby Surround Mode:** indicates if the audio is two-channel Dolby or not. Options are:

Unspecified: indicates the decoder must determine the audio format by itself.

Disabled: indicates the audio is not encoded in surround mode.

Enabled: indicates the audio is encoded in surround mode.

5.4 "Main > Audio" Screen (continued)

- 8** **Line Mode:** allows the user to select the type of Dynamic Range Compression to be applied to signals that will be used as direct audio feeds into a TV tuner or other receive devices. (Factory Default: "None")
- 9** **RF Mode:** allows the user to select the type of Dynamic Range Compression to be applied to signals that will be used for retransmission on an RF carrier, and fed into a TV tuner or other receive device(s). (Factory Default: "None")

Options for **8** and **9** are:

- i) **None:** no dynamic range controls have been assigned.
- ii) **Film Standard:** suitable for movies where the very low-level sounds are not to be amplified due to other undesirable background noises that may become audible, but rather the peaks and valleys are normalized instead. It has a null bandwidth of 10 dB (-31 to -21 dB) and can add up to 6 dB of boost for low levels and attenuate high levels.
- iii) **Film Light:** is similar to "Film Standard" but with a null bandwidth of 20 dB (-41 to -21 dB) and can add up to 6 dB of boost for low levels and attenuate high levels.
- iv) **Music Standard:** suitable for program content that is mainly made up of music where the sound level is to be normalized (reducing the loudness) to be consistent with other programs. It has a null bandwidth of 10 dB (-31 to -21 dB) and can add up to 12 dB of boost for low levels and attenuate high levels.
- v) **Music Light:** similar to "Music Standard" but with a null bandwidth of 20 dB (-41 to -21 dB) and can add up to 12 dB of boost for low levels and attenuate high levels.
- vi) **Speech:** suitable for program content that is mainly made up of speech only and has a null band width of 10 dB (-31 to -21 dB) for average speech and can add up to 15 dB of boost for low levels and attenuate high levels.



Remember to click on the **SAVE** button to apply the new values/configurations.

5.5 "Main > TS Config" Screen

The "Main > TS Config" screen (Figure 5.5) is a "read and write" screen to assign the TS parameters:

Figure 5.5 - "Main > TS Config" Screen

In the section entitled "TS Output Configuration", the user can select and configure the following parameters of the output TS:

- 1 **TS ID:** user must enter the identification number for the Transport Stream (TS) output. The range is 1 to 65535.
- 2 **TS Bitrate:** user must select the bitrate for the output TS. Options are 19.39 Mbps and 38.81 Mbps.



Always select the option "QAM Modulator", if QAM output is required. The TS Bitrate assigned will then depend on the "Output QAM Mode" selected on the "Main > QAM" Screen (refer 5 in Section 5.7 for details) and will be as follows:

QAM Output Mode	TS Bitrate assigned (Mbps)
64B	26.97
256B	38.81
16A	18.64
32A	23.30
64A	27.96
128A	32.62
256A	37.28

5.5 "Main > TS Config" Screen (continued)

- 3 **Modulation Mode:** allows the user to select the modulation mode. Options are: Reserved, Analog, QAM64, QAM256, 8-VSB, and 16-VSB.
- 4 **Out of Band:** An out-of-band (OOB) is a channel which is the combination of the forward and reverse OOB channels. When a cable virtual channel is flagged as being out-of-band, it is carried on the out-of-band channel. Options are Enable and Disable. When Enabled, assigns the OOB bit in the TS packet and labels the TS as out-of-band.

NOTE: As per the ATSC and Cable standards, the Modulation Mode and Out-of-Band fields are required to be assigned in the TS packet. Selecting the above two fields would allow the TS packets to be compliant with industry standards, but would not affect the input or output configuration of the HDE-CHV-QAM/IP.

In the section entitled "**Output Mapping**", the user can select and configure the following parameters for the output TS indicated by "**TS - QAM/ASI**" under gray header:

- 5 **Input:** indicates the program selected by the user. It includes the Input video source, and audio source.
- 6 **PID:** user must enter the PID value for each stream. PID (Packet Identifier) values are embedded by the content provider in the MPEG-2 stream to identify tables and programming packets.



The PID value must be unique in an output stream. If a duplicate PID exists, assign a different PID in the range of 48 to 8176 (recommended range provided by the International Standards)

- 7 **Program Number:** user must enter an output program number. The PMT (Program Map Table) provides information for program present in the transport stream such as program_number, and the list of the elementary streams (audio, video or data). The range is 1 to 65535.
- 8 **Short Name:** user must enter the short name of the channel. Up to 7 alphanumeric characters are allowed.
- 9 **Major Channel:** user must enter the major channel number for the output program. The range is 1 to 99 for Terrestrial and 1 to 999 for Cable.
- 10 **Minor Channel:** user may enter minor channel number for the output program. The range is 1 to 99 for Terrestrial and 0 to 999 for cable. NOTE: When zero (0) is entered as a minor channel, it sets the encoder to provide a one part virtual channel number as entered in the major channel field. For example, a major channel of "205" with a minor channel of "0" will be displayed as "205" on a TV. A major channel of "205" with a minor channel of "1" will be displayed on a TV as "205-1".



Remember to click on the SAVE button to apply the new values/configurations.

5.6 "Main > IP" Screen

The "Main > IP" screen (Figure 5.6) is a "read and write" screen to assign IP parameters for the TS:

HDE-CHV-QAM/IP							
ESN: 2016020324		Temperature: 125.3°F		Uptime: 0d 0h 23m 58s			
Headend Name:		Location:					
Main	Network	Time	Event Log	Logout	Admin		
Status	Video	Audio	TS Config	IP	QAM	Output	Refresh
IP Output Config							
1 Destination IP	2 Encapsulation	3 Destination Port	4 Source Port	5 Time to Live	6 Stuffing		
192.168.253.2	UDP	50000	50000	128	Enabled		
Save							

Figure 5.6 - "Main > IP" Screen

- 1 **Destination IP:** allows user to assign the IP address of the equipment to which the IP output is streamed to. (Factory Default: "192.168.253.2")



The Destination IP Address must be present before streaming occurs, otherwise the session is aborted. For Multicast applications, the IP address must be in the range of 224.0.0.0 through 239.255.255.255. For Unicast applications, the IP address must be outside the above-mentioned range

- 2 **Encapsulation:** user must select the protocol that matches the protocol used by the receiving equipment. Options are RTP and UDP. (Factory Default: "UDP")
- 3 **Destination Port:** user must enter the IP Port of the receiving equipment. The range is 1 to 65535. (Factory Default: "50000")
- 4 **Source Port:** user must enter the IP Port of the equipment that the input IP source is streamed from. The range is 1 to 65535. (Factory Default: "50000")

NOTE: Port number is recommended to be from 49152 to 65535. Reason: Port 1-1023 and 1024-49151 are the Reserved Ports and the Registered Ports, respectively.

- 5 **Time to Live:** is an upper bound on the time that an IP packet can exist in an IP network. The value is set by the sender of the packet, and reduced by every host on the route to packet's final destination. If the Time to Live reaches zero before the packet arrives at its final destination, then the packet is discarded. The purpose of this field is to avoid an undeliverable packet from circulating on an IP network perpetually. The range is 1 to 255. (Factory Default: "128")

- 6 **Stuffing:** Null packets are inserted to ensure that the TS bitrate assigned in 2 of Section 5.5 remains constant. Options are Enable and Disable. It is advisable to Disable stuffing when only IP output is used to help reduce the traffic on the network.



Remember to click on the SAVE button to apply the new values/configurations.

5.7 "Main > QAM" Screen

The "Main > QAM" screen (Figure 5.7) is a "read and write" screen to assign QAM parameters to the TS:

Status	Video	Audio	TS Config	IP	QAM	Output	Refresh
QAM Module							
1	Output Channel/Frequency	70 / 501 MHz					
2	Output Control	On					
3	CW Control	<input type="checkbox"/> Enable CW for QAM Module					
4	Final Output Level	42.0 dBmV					
5	Output QAM Mode	256B					
6	Output QAM Map	STD					
7	Output QAM Data Rate	5.360537 Mbaud					
8	Output QAM Interleaver	128-1					
9	QAM Lock State	Lock					

Figure 5.7 - "Main > QAM" Screen

- Output Channel/Frequency:** user must assign an RF channel number to the RF QAM output of the QAM module (i.e. RF channel 2, as shown in Figure 5.7). The range is CATV channels T7 to T14, 2 to 158.



The RF Channel number will be displayed on TV only if the source stream does not carry any virtual channel number.

- Output Control:** allows the user to turn the RF channel On/Off.
- CW Control:** allows the user to switch the QAM output mode to CW (Continuous Waveform) which activates an analog carrier at the selected channel's center frequency; this is typically used in level adjustment of the system.
- Final Output Level:** must select the QAM RF output level for the output. The range is 32 to 42 dBmV. It is recommended to maintain the output level at 40 dBmV for normal operation.
- Output QAM Mode:** must select the desired QAM modulation mode. Possible options are: 64B, 256B, 16A, 32A, 64A, 128A, and 256A. For most applications in the USA, the recommended QAM modulation mode is 256B.
- Output QAM Map:** must select the desired QAM Map. Possible options are STD, IRC, and HRC.
- Output QAM Data Rate:** indicates the maximum data rate depending on the selected QAM mode, for example 5.3605 Mbaud for QAM 256B.
- Output QAM Interleaver:** indicates the interleaver value for the QAM mode.
- QAM Lock State:** indicates whether QAM module is working properly (locked) or not.

NOTE: The module may take a few seconds to lock up when QAM output parameters are changed.



Remember to click on the SAVE button to apply the new values/configurations.

5.8 "Main > Output" Screen

The "Main > Output" screen (Figure 5.8) is a "read and write" screen to assign the TS to desired IP, QAM, and ASI outputs:

Status	Video	Audio	TS Config	IP	QAM	Output	Refresh
TS				Output			
① TS Mapping			② Bitrates	③ IP		④ QAM	
TS	25.48 / 38.81		IP (UDP://239.10.10.10:50000)		Ch. 70		
100 (1) () (3-1)	25.25						
101 V: Component	25.04						
102 A: Analog	0.20						

Save

Figure 5.8 - "Main > Output" Screen

In the section entitled "TS" under an orange header, the following parameters about the TS are displayed:

- ① **TS Mapping:** indicates the program assigned to the TS. The program information includes the PMT PID, Program number, Short Name, Major-minor channel number. For example, under TS [100 (1) (Test) (3-0)] the following information is displayed:
 - 100 - indicates the Program MAP Table (PMT) of the program.
 - 1 - indicates the Program number as assigned in ⑦ of Section 5.5.
 - Test - indicates the Short Name as assigned in ⑧ of Section 5.5.
 - 3-0 - indicates the Major - minor channel number as assigned in ⑨ and ⑩ of Section 5.5.
 - 101 V: HDMI - indicates that the input video source is HDMI and the elementary stream PID is 101.
 - 102 A: HDMI - indicates that the input audio source is HDMI and the elementary stream PID is 102.

- ② **Bitrates:** indicates the assigned transport stream bitrate (see ② of Section 5.3 for details) and the TS Bitrate (see ② of Section 5.5 for details).

In the section entitled "Output" under a blue header, the following parameters about the output TS are displayed:

- ③ **IP:** displays the IP address, and the port number to which TS is assigned (see ① of Section 5.6 for details). To disable the IP output, select "None".
- ④ **QAM:** displays the QAM RF channel number of the QAM output (see ① of Section 5.7 for details).



Remember to click on the SAVE button to apply the new values/configurations.

5.9 "Main > Refresh" Tab

The "Main > Refresh" tab can be clicked while you are on any of the following sub-tabs screens: "Status", "Video", "Audio", "TS Config", "IP", "QAM", and "Output". When clicked, it will update all relevant fields/ parameters of the active screen as that information is retrieved from the HDE-CHV-QAM/IP in a real time basis.

5.10 "Network" Screen

The "Network" screen (Figure 5.10) is a read and write screen where the following parameters are displayed and configured:

Figure 5.10 - "Network" Screen

- 1 **Ethernet MAC Address:** indicates the MAC Address of the "Remote Control/Data 100/1000" Port.
- 2 **Software Version:** indicates the software version of the unit.
- 3 **FPGA Version:** indicates the current hardware version of the unit's FPGA chipset.
- 4 **QAM Version:** indicates the current software version of the unit's QAM output module.
- 5 **Hardware Version:** indicates the current hardware version of the unit.
- 6 **Serial Number:** indicates the unit's serial number.
- 7 **Headend Name:** a user-defined field to make identification easier.
- 8 **Location:** another user-defined field to make identification easier.
- 9 **Login Timeout (Minutes):** indicates the period of time before the unit logs itself out if there is no activity on the web screens. Options are 5, 15, 30, or 60 minutes. (Factory Default: "5" minutes)
- 10 **Ethernet IP Address:** see 15 of Section 5.11 for details.
- 11 **Ethernet Subnet Mask:** see 16 of Section 5.11 for details.
- 12 **Ethernet Default Gateway:** see 17 of Section 5.11 for details.



Remember to click on the SAVE button to apply the new values/configurations.

5.11 "Admin" Screen

The "Admin" Screen (Figure 5.11) is a read and write screen where the following parameters are displayed and configured:

HDE-CHV-QAM/IP

ESN: 2016020324
Headend Name:

Temperature: 125.3°F

Uptime: 0d 0h 25m 25s
Location:

Main
Network
Time
Event Log
Logout

Admin

Ethernet MAC Address:	00:14:39:00:6b:fd
Software Version:	1.0.0.10
FPGA Version:	1.14
QAM Version:	1.4
Hardware Version:	1
Serial Number:	2016020324

"Current" passwords are "pass"

1 → Login:	<input type="text" value="Admin"/>
2 → Current Password:	<input type="password"/>
3 → New Password:	<input type="password"/>
4 → Confirm New Password:	<input type="password"/>
5 → Guest Login:	<input type="text" value="Guest"/>
6 → Current Guest Password:	<input type="password"/>
7 → New Guest Password:	<input type="password"/>
8 → Confirm Guest Password:	<input type="password"/>

9 → <input type="button" value="Save Configuration Settings"/>	<input type="button" value="Default Unit Settings"/>	10 ←
---	--	-------------

11 → Load Settings From File:	<input type="button" value="Choose File"/> No file chosen <input type="button" value="Load & Apply Configuration Settings"/>
--------------------------------------	---

12 → Software/Firmware Update:	<input type="button" value="Choose File"/> No file chosen <input type="button" value="Update Firmware/Software"/>
Restore Previous Firmware Version:	<input type="button" value="Restore Previous Firmware"/>

13 → System Watchdog:	<input type="text" value="Disabled"/>
14 → System Reboot:	<input type="button" value="Reboot Unit"/>

15 → Ethernet IP Address:	<input type="text" value="172.16.70.1"/>
16 → Ethernet Subnet Mask:	<input type="text" value="255.255.255.0"/>
17 → Ethernet Default Gateway:	<input type="text" value="172.16.70.254"/>
18 → Event Log Destination:	<input type="text" value="172.16.70.2"/>
19 → Log Destination Port #:	<input type="text" value="514"/>
20 → Time Server IP:	<input type="text" value="172.16.70.2"/>

21 → Syslog Errors:	<input type="radio"/> Enabled <input checked="" type="radio"/> Disabled
22 → Syslog Informational:	<input type="radio"/> Enabled <input checked="" type="radio"/> Disabled
23 → Syslog Feedback:	<input type="radio"/> Enabled <input checked="" type="radio"/> Disabled

Figure 5.11 - "Admin" Screen

5.11 "Admin" Screen (continued)

The following parameters can be modified:

- 1 **Login:** is the Administrator's login (10 characters maximum). This login allows the user to make changes to any area of the unit. Login is case sensitive. (Factory Default: "Admin")
- 2 **Current Password:** is the Administrator's Current Password (10 characters maximum). Password is case sensitive and will not be displayed. (Factory Default: "pass")
- 3 **New Password:** used only if the user wants to change the current Administrator's password. Must enter a new password (10 characters maximum). Password is case sensitive and will not be displayed.
- 4 **Confirm New Password:** user must enter the same password as entered in 3 above. If password entered in 3 & 4 does not match, an error will be displayed.
- 5 **Guest Login:** is the Guest login (10 characters maximum). This login allows the user to view the unit settings but does not allow any changes. Login is case sensitive. (Factory Default: "Guest")
- 6 **Current Guest Password:** is the Current Guest Password (10 characters maximum). Password is case sensitive and will not be displayed. (Factory Default: "pass")
- 7 **New Guest Password:** used only if the user wants to change the current Guest password. User must enter a new password (10 characters maximum). Password is case sensitive and will not be displayed.
- 8 **Confirm Guest Password:** user must enter the same password as entered in 7 above. If password entered in 7 & 8 does not match, an error will be displayed.
- 9 **Save Configuration Settings:** allows the user to download and save the existing configuration of the unit in a .dat file format.
- 10 **Default Unit Settings:** Returns all "Main" tabs (with the exception of the "QAM" Tab) to the original settings as shipped from the factory.
- 11 **Load Settings from File:** Not recommended for basic users. Please consult the factory regarding this function.
 - Choose File:** allows the user to select the desired Config file from any location on the computer to be uploaded to the unit.
 - Load & Apply Configuration Settings:** allows the user to upload a newly created file or update an existing file.
- 12 **Software/Firmware Update:** Click "Choose File" to select the firmware update file to be applied by "Update Firmware/Software". When update is initiated, an update screen will appear and will display time remaining to complete update. When update is complete, unit will automatically reboot and return to admin screen.
 - Restore Previous Firmware Version:** returns the encoder to the last installed firmware version before the current update.
- 13 **System Watchdog:** options are "Enabled" and "Disabled". When Enabled, automatically reboots the unit if the operating system stops working. (Factory Default: "Disabled")
- 14 **System Reboot:** allows the user to reboot HDE-CHV-QAM/IP.
- 15 **Ethernet IP Address:** the static IP address that is assigned to the unit. It allows the user to access the unit via the web interface and also receive IP output. (Factory Default: "172.16.70.1")
- 16 **Ethernet Subnet Mask:** the Subnet Mask address of the unit. It allows the user to access the unit from another network via the web interface. (Factory Default: "255.255.255.0")
- 17 **Ethernet Default Gateway:** the gateway address of the unit. It allows the user to access the unit from another network via the web interface. (Factory Default: "172.16.70.254")



Remember to click on the SAVE button to apply the new values/configurations.

5.11 "Admin" Screen (continued)

- 18 **Event Log Destination:** the IP address of the remote server, to which Syslog sends the activities recorded by HDE-CHV-QAM/IP for monitoring and troubleshooting purposes. (Factory Default: "172.16.70.2")
- 19 **Log Destination Port #:** the Error Log Destination port to which a duplicate of the error messages created by the unit can be forwarded for monitoring and troubleshooting purposes. (Unmodifiable Factory Default: "514")
- 20 **Time Server IP:** is the IP address for the Time Server from where the unit can obtain its clock reference (see Section 5.12 for details). (Factory Default: "172.16.70.2")
- 21 **Syslog Errors:** is to enable/disable HDE-CHV-QAM/IP to forward error messages (in red font) to syslog. (Factory Default: "Disabled")
- 22 **Syslog Informational:** is to enable/disable HDE-CHV-QAM/IP to forward information messages (in blue font) to syslog. (Factory Default: "Disabled")
- 23 **Syslog Feedback:** is to enable/disable HDE-CHV-QAM/IP to forward feedback or confirmation messages (in green font) to syslog. (Factory Default: "Disabled")



Remember to click on the **SAVE** button to apply the new values/configurations.

5.12 "Time" Screen

The "Time" screen (Figure 5.12) is a "read and write" screen that allows you to set the current date and time for the HDE-CHV-QAM/IP. To remain compliant with ATSC and cable standards, it is important to have the accurate date and time stamps. For this reason, it is recommended to use the "NTP Server" option which allows the unit to automatically acquire time settings from a "NTP Server" - you must enter the IP address of the time server (see 20 of Section 5.11 for details).

Figure 5.12 - "Time" Screen

- 1 In the section entitled "Time Adjustments", the local time zone based on Coordinated Universal Time (UTC) can be set.
- 2 In the section entitled "Daylight Saving Time", the user can set the Daylight Saving Settings either manually or automatically using the DST Adjustment option.
- 3 In the section entitled "NTP Server", the user can enter the IP address of the NTP server to acquire the time directly from the NTP Server when an internet connection is available.
- 4 In the section entitled "Set Date & Time", the user can manually enter the date and time.



Remember to click on the buttons below the individual sections or the "Apply All Time Settings" to apply and save the new values/configurations.

5.13 "Event Log" Screen

The "Event Log" screen (Figure 5.13) is a "read and write" screen where the following parameters can be displayed or configured. The data in Event Log can be forwarded to a SysLog database – (see 21, 22, & 23 of Section 5.11 for details). The lines are color coded as follows:

- Red font = error message
- Blue font = informational message
- Green font = confirmation or feedback message

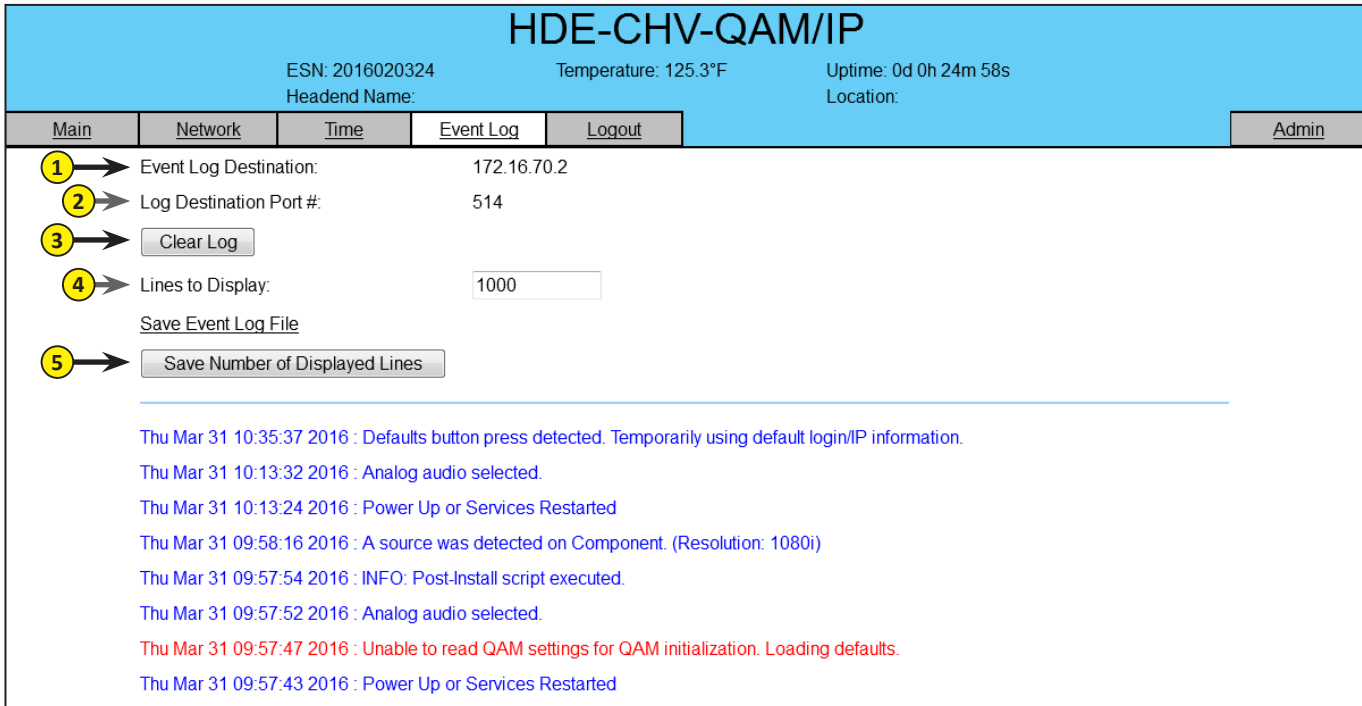


Figure 5.13 - "Event Log" Screen

- 1 **Event Log Destination:** see 18 of Section 5.11 for details.
- 2 **Log Destination Port #:** see 19 of Section 5.11 for details.
- 3 **Clear Log:** allows user to clear the records generated during unit's boot-up process and operation afterward. The records are retained if the unit loses power.
- 4 **Lines to Display:** allows the user to select the number of lines to be displayed. The unit supports up to 400 Mb of data or approximately 65,000 lines. The range is 1 to 65,535.
- 5 **Save Number of Displayed Lines:** allows the user to save the error log on the screen. Please note that the error log would be saved only on the screen and not on any database.

Appendix A: Viewing the IP output on a VLC Media player

To view the IP output from the HDE-CHV-QAM/IP on a VLC Media player in a computer or laptop. The procedure is divided into two steps:

Step 1: Change the IP address of the computer

Step 2: Using the VLC Media Player (<http://www.videolan.org/>)

NOTE: Step 1 needs to be followed only if a unicast IP address is assigned in the “Destination IP” field on the “Main > IP” screen (see ① of Section 5.6 for details). If multicast IP address is used, then go to Step 2.

Step 1: Change the IP address of the computer

- i) Change the IP address of the computer to match the “Destination IP” updated on the “Main > IP” screen (see ① of Section 5.6 for details and see Section 4 for instructions to change IP address of a computer).

Step 2: Using the VLC Media Player

- i) Open VLC Media Player.
- ii) Select **Media** → **Open Network Stream**.
- iii) Under the “**Network Protocol**” field, enter the network address using any one of the formats depending on the “Encapsulation” method selected on the “Main > IP” screen (see ② of Section 5.6 for details):

rtp://@<ip address>:<port no.>
 eg: rtp://@239.10.10.31:50001

or

udp://@<ip address>:<port no.>
 eg: udp://@192.168.253.100:50055

NOTE: For uni-cast, the <ip address> will be the IP address of the computer. For multicast, the <ip address> will be the multicast address assigned under the “Destination IP” on “Main > IP” screen (see ① of Section 5.6 for details).

- iv) Select Play.

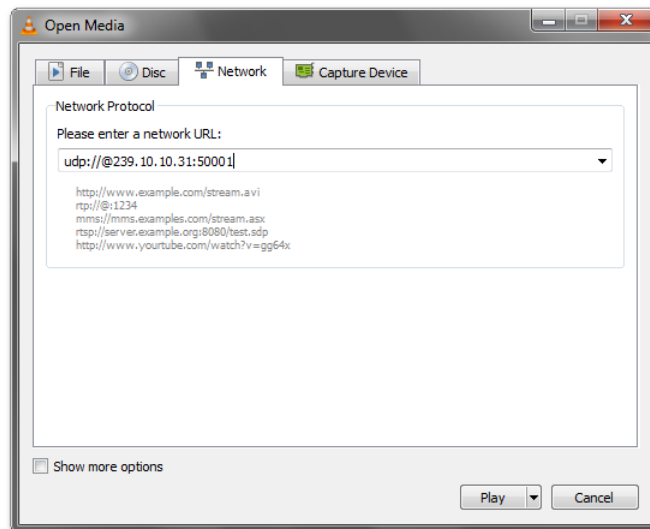


Figure 5.14 - VLC "Network Protocol" Screen

NOTES



Blonder
Tongue



SOLUTIONS FOR ALL YOUR APPLICATIONS

Encoders • EdgeQAM/IP • Transcoders • HD Solutions • OEM

Extended Warranty Program

STANDARD TERMS & CONDITIONS OF THE EXTENDED WARRANTY

A. THE EXTENDED WARRANTY AGREEMENT (EWA)

If during the period following the expiration of the Blonder Tongue Manufacturers' Standard Warranty (Copy Included) the products which constitute the subject matter of the extended warranty, manifest any manufacturing or similar such defects then Blonder Tongue shall at its option repair or replace the product. It is emphasized that the extended warranty is in effect an extension of the Blonder Tongue Warranty and covers the items stipulated in Paragraph B to the exclusion of the terms in Paragraph C of this agreement. Eligibility to purchase EW is limited to 90 days following initial shipment on selected products of sufficient value.

The product/products included in this extended warranty agreement are listed in the invoice that accompanies the EWA. Term of the extension will be _____ year(s). Purchase Order is required for extended warranty coverage.

B. WHAT IS COVERED?

1. If a product has been determined to have failed, which falls within the Terms & Conditions of this EWA, Blonder Tongue Inc. may at its sole discretion repair, modify or replace its component parts that are defective at 100% coverage for parts and labor.
2. A loaner unit may be available on request; PO required.
3. Product is manufactured by Blonder Tongue.
4. Extended warranty period is up to and not to exceed 24 months and sold in increments of 12 months. Order # 9981 for 1 year and #9982 for 2 year extensions.
5. Return of repair or replaced product shipping costs for ground shipments.
6. Firmware upgrades at no charge with automatic notification.

C. WHAT IS NOT COVERED?

1. The warranty does not cover any defects caused by foreign objects /connection errors .
2. Use other than by the customer at the declared address appearing in this document.
3. Failure by the end user to comply with the manufacturers' instructions for installation, maintenance or use.
4. The use of accessories which have not been approved by Blonder Tongue.
5. The application and/or use of any incorrect or abnormal electrical supply to the product.
6. Any defect in wiring or electrical connections which does not form part of the product at the time of the original purchase.
7. Neglect, misuse, or willful abuse of the product.
8. Any repairs or attempted repairs of the product by any person other than Blonder Tongue Service Department.
9. Any modification of the product by any person other than Blonder Tongue Service Department.
10. Fire, flood, war, civil disturbance, industrial action, acts of God or any other causes beyond the reasonable control of Blonder Tongue.
11. Any defect caused by lightning strike or power surges.
12. Shipping costs to return products to Blonder Tongue for warranty service.
13. Blonder Tongue will not in any circumstances be liable for any consequential loss or damages suffered by the customer whether directly or in directly related defect in the product to the extent permissible by law.
14. Repairs may not be effected without prior authorization from Blonder Tongue Laboratories.

D. GENERAL

1. The customer shall notify Blonder Tongue Laboratories in writing within ten days of any change of his or her address.
2. Customer must provide original **purchase receipt** and **serial number** to initiate extended warranty coverage.
3. The fee paid for the warranty is not refundable under any circumstances unless cancelled within seven days of purchase.
4. The customer shall take all reasonable precautions to maintain the product is maintained in good working order.
5. The warranty contract ceases to exist if the product is replaced or a credit is given to the customer. Any monies paid for the warranty contract are forfeited and not refundable. This is only applicable when the product is out of the manufacturer's warranty.
6. The extended warranty period as stated on the Extended Warranty Agreement shall be the governing period notwithstanding any additional supplier warranty on specific components.
7. The warranty shall in no way effect the terms and conditions of the sale agreement in terms of which the customer bought the product.
8. The extended warranty is limited to the terms and conditions herein contained
9. No agreement, varying, adding to, amended, deleting, or cancelling this warranty shall be effective unless given in writing (email is acceptable) and signed by or on behalf of both parties.
10. The cost of the extended warranty is 8% of the purchase price for a 1 or 2 year extension beyond the Blonder Tongue standard warranty. e.g. A product price of \$1000 will be \$80 for the 1st year (12 mos) and additional \$80 for 2 year (24 mos) extension for a total of \$160.
11. Warranty product return postage paid to: Blonder Tongue Laboratories, Inc.

Attn: Warranty Service Dept.
1 Jake Brown Road
Old Bridge, NJ 08857

Limited Warranty

Seller will at its sole option, either repair or replace (with a new or factory reconditioned product, as Seller may determine) any product manufactured or sold (or in the case of software, licensed) by Seller which is defective in materials or workmanship or fails to meet the applicable specifications that are in effect on the date of shipment or such other specifications as may have been expressly agreed upon in writing: (i) for a period of three (3) years from the date of original purchase for all stock hardware products (other than those specifically referenced herein below having a shorter warranty period); (ii) for a period of one (1) year from the date of original purchase, with respect to all MegaPort™, IPTV products, test equipment and fiber optics receivers, transmitters, couplers and integrated receiver/distribution amplifiers; (iii) for a period of one (1) year from the date of original purchase (or such shorter period of time as may be set forth in the license agreement specific to the particular software being licensed from Seller) with respect to all software products licensed from Seller (other than Core Product Software) that is (a) developed for a specific function or application, (b) complimentary to and does not function without the Core Product Software, and (c) listed with a specific model number and stock number in Seller's Price List ("**Non-Core Software**"); (iv) for a period of ninety (90) days from the date of original purchase, with respect to non-serialized products and accessories, such as parts, sub-assemblies, splitters and all other products sold by Seller (other than Core Product Software and Refurbished/Closeout Products) not otherwise referred to in clauses (i) through (iii) above. The warranty period for computer programs in machine-readable form included in a hardware product, which are essential for the functionality thereof as specifically stated in the published product specifications ("**Core Product Software**") will be coincident with the warranty period of the applicable hardware product within which such Core Product Software is installed.

Software patches, bug fixes, updates or workarounds do not extend the original warranty period of any Core Product Software or Non-Core Software.

Notwithstanding anything herein to the contrary,

(i) Seller's sole obligation for software that when properly installed and used does not substantially conform to the published specifications in effect when the software is first shipped by Seller, is to use commercially reasonable efforts to correct any reproducible material non-conformity (as determined by Seller in its sole discretion) by providing the customer with: (a) telephone or e-mail access to report non-conformance so that Seller can verify reproducibility, (b) a software patch or bug fix, if available or a workaround to bypass the issue if available, and (c) where applicable, replacement or damaged or defective external media, such as CD-ROM disk, on which the software was originally delivered;

(ii) Seller does not warrant that the use of any software will be uninterrupted, error-free, free of security vulnerabilities or that the software will meet the customer's particular requirements; and the customer's sole and exclusive remedy for breach of this warranty is, at Seller's option, to receive (a) suitably modified software, or part thereof, or (b) comparable replacement software or part thereof;

(iii) Seller retains all right, title and interest in and to and ownership of all software (including all Core Product Software and Non-Core Software) including any and all enhancements, modifications and updates to the same; and

(iv) in some cases, the warranty on certain proprietary sub-assembly modules manufactured by third-party vendors and contained in Seller's products, third party software installed in certain of Seller's products, and on certain private-label products manufactured by third-parties for resale by Seller, will be of shorter duration or otherwise more limited than the standard Seller limited warranty. In such cases, Seller's warranty with respect to such third-party proprietary sub-assembly modules, third-party software and private-label products will be limited to the duration and other terms of such third-party vendor's warranty, if any. In addition, certain products, that are not manufactured by Seller, but are resold by Seller, may carry the original OEM warranty for such products, if any. The limited warranty set forth above does not apply to any product sold by Seller, which at the time of sale constituted a Refurbished/Closeout Product, the limited warranty for which is provided in the following paragraph.

Seller will at its sole option, either repair or replace (with a new or factory-reconditioned product, as Seller may determine) any product sold by Seller which at the time of sale constituted a refurbished or closeout item ("**Refurbished/Closeout Product**"), which is defective in materials or workmanship or fails to meet the applicable specifications that are in effect on the date of shipment of that product or fails to meet such other specifications as may have been expressly agreed upon in writing between the parties, for a period of ninety (90) days from the date of original purchase. Notwithstanding the foregoing, in some cases the warranty on certain proprietary sub-assembly modules manufactured by third-party vendors and contained in Seller products, third party software installed in certain of Seller's products, and on certain private-label products manufactured by third-parties for resale by Seller will be of shorter duration or otherwise more limited than Seller limited warranty for Refurbished/Closeout Products. In such cases, Seller's warranty for Refurbished/Closeout Products constituting such third party proprietary sub-assembly modules, third party software, and private-label products will be limited to the duration and other terms of such third-party vendor's warranty, if any. In addition, notwithstanding the foregoing, (i) certain Refurbished/Closeout Products that are not manufactured (but are resold) by Seller, may carry the original OEM warranty for such products, if any, which may be longer or shorter than Seller's limited warranty for Refurbished/Closeout Products. All sales of Refurbished/Closeout Products are final.

To obtain service under this warranty, the defective product, together with a copy of the sales receipt, serial number if applicable, or other satisfactory proof of purchase and a brief description of the defect, must be shipped freight prepaid to Seller at the following address: One Jake Brown Road, Old Bridge, New Jersey 08857.

This warranty does not cover failure of performance or damage resulting from (i) use or installation other than in strict accordance with manufacturer's written instructions, (ii) disassembly or repair by someone other than the manufacturer or a manufacturer-authorized repair center, (iii) misuse, misapplication or abuse, (iv) alteration, (v) exposure to unusual physical or electrical stress, abuse or accident or forces or exposure beyond normal use within specified operational or environmental parameters set forth in applicable product specifications, (vi) lack of reasonable care or (vii) wind, ice, snow, rain, lightning, or any other weather conditions or acts of God.

OTHER THAN THE WARRANTIES SET FORTH ABOVE, SELLER MAKES NO OTHER WARRANTIES OR REPRESENTATIONS OF ANY KIND, EXPRESS OR IMPLIED, AS TO THE CONDITION, DESCRIPTION, FITNESS FOR A PARTICULAR PURPOSE, MERCHANTABILITY, OR AS TO ANY OTHER MATTER, AND SUCH WARRANTIES SET FORTH ABOVE SUPERSEDE ANY ORAL OR WRITTEN WARRANTIES OR REPRESENTATIONS MADE OR IMPLIED BY SELLER OR BY ANY OF SELLER'S EMPLOYEES OR REPRESENTATIVES, OR IN ANY OF SELLER'S BROCHURES MANUALS, CATALOGS, LITERATURE OR OTHER MATERIALS. IN ALL CASES, BUYER'S SOLE AND EXCLUSIVE REMEDY AND SELLER'S SOLE OBLIGATION FOR ANY BREACH OF THE WARRANTIES CONTAINED HEREIN SHALL BE LIMITED TO THE REPAIR OR REPLACEMENT OF THE DEFECTIVE PRODUCT F.O.B. SHIPPING POINT, AS SELLER IN ITS SOLE DISCRETION SHALL DETERMINE. SELLER SHALL IN NO EVENT AND UNDER NO CIRCUMSTANCES BE LIABLE OR RESPONSIBLE FOR ANY CONSEQUENTIAL, INDIRECT, INCIDENTAL, PUNITIVE, DIRECT OR SPECIAL DAMAGES BASED UPON BREACH OF WARRANTY, BREACH OF CONTRACT, NEGLIGENCE, STRICT TORT LIABILITY OR OTHERWISE OR ANY OTHER LEGAL THEORY, ARISING DIRECTLY OR INDIRECTLY FROM THE SALE, USE, INSTALLATION OR FAILURE OF ANY PRODUCT ACQUIRED BY BUYER FROM SELLER.

All claims for shortages, defects, and non-conforming goods must be made by the customer in writing within five (5) days of receipt of merchandise, which writing shall state with particularity all material facts concerning the claim then known to the customer. Upon any such claim, the customer shall hold the goods complained of intact and duly protected, for a period of up to sixty (60) days. Upon the request of Seller, the customer shall ship such allegedly non-conforming or defective goods, freight prepaid to Seller for examination by Seller's inspection department and verification of the defect. Seller, at its option, will either repair, replace or issue a credit for products determined to be defective. Seller's liability and responsibility for defective products is specifically limited to the defective item or to credit towards the original billing. All such replacements by Seller shall be made free of charge f.o.b. the delivery point called for in the original order. Products for which replacement has been made under the provisions of this clause shall become the property of Seller. Under no circumstances are products to be returned to Seller without Seller's prior written authorization. Seller reserves the right to scrap any unauthorized returns on a no-credit basis. Any actions for breach of a contract of sale between Seller and a customer must be commenced by the customer within thirteen (13) months after the cause of action has accrued. A copy of Seller's standard terms and conditions of sale, including the limited warranty, is available from Seller upon request. Copies of the limited warranties covering third-party proprietary sub-assembly modules and private-label products manufactured by third-parties may also be available from Seller on request. (Rev 0713)