

8A 6 8][]H' 'A YX]U' 6f]X[Y

Everything you need for digital signage



Powerful Performance And Reliability

Cilutions DMB Media Player offers superior digital signage software capabilities and exceptional Full HD video quality within solid-state and hard drive set-top box platforms. These players deliver the absolute highest standard of reliability and affordability.

Easy To Use, Sophisticated Features

Full HD 1080p video, Live HDTV, scrolling text and RSS feeds with advanced interactivity options. With Cilutions digital signage software you get powerful results. Skip the digital signage learning curve with Cilutions easy-to-use features and simple screen authoring tool to build multi-zone screen layouts and more. Captivate your audience with dynamic integration and engaging interactive controls.



Signage, All Inclusive

Cilutions DMB Screen Builder application offers an easy way to create and build screen presentations. With a wide range of networking options available for each media player, you can manage your network of digital signage screens no matter where they are located. You can even use Cilutions Hosted Service to remotely update your Internet-based digital signage media players. Cilutions offers the most cost-effective, powerful, digital signage solution available today.



8A 6 8][]W`A YX]U`6f]X[Y

Exceptional Capabilities



Emergency Broadcast Support

Support for designation of an emergency broadcast video stream that, when active, will interrupt each digital signage screen in the network.



Looping Playlist Support

Support for multiple images or videos in a list.



Video and Image Playlists

Permits combining videos and images in playlists for rendering in screen zones.



Zones

Support for multiple content windows displayed on a single screen.



Text Ticker Feed and Subtitles

Support for scrolling text messages.



Usage Tracking Statistics

Audit logs recording player performance.



Playback Scheduling and Day-Parting

Support for controlling screen layouts and playlists by time of day.



Twitter

Support for displaying a real-time twitter feed.



Interactive Digital Signage

Create user interactive screens to move from one digital signage screen to another.



Real Time Weather Display

Graphical and text display zones rendering location based, real-time weather conditions.



Transparent Image Over Video

Support for image files, with a configured transparency level, that can be used to overlay some or all of a video zone - thereby providing unique "branding" (e.g., a customer logo) over a portion of the video at each player location.



Live Video

Support for live video feeds in your digital signage or video-on-demand application.



RSS Feed

Support for scrolling news feeds from an external source.

8A 6 8][]H' A YX]U' 6f]X[Y



Fully Functioning IPTV Settop for Both IPTV Systems & Internet Content With Its Own Free Middleware

MAG254

- MPEG2/4 SD and HD
- WiFi
- UPnP
- HDMI 1.4A Interface
- S/PDIF
- Media Playback
- Dual USB Interfaces
- Remote I/R Jack
- Composite Video / Audio Output
- Timeshift (using USB stick)
- Record and Playback (USB)
- Secure Media Content Protection
- VOD
- Verimatrix CAS* (by order MAG255)



The MAG254 is the optimal settop box solution for any IPTV / OTT content application. With a powerful 650 MHz processor (STi H207) and 512 Mb of RAM, the MAG254 is an excellent choice for high performance, high definition IPTV systems.

By use of USB, customers have the ability of record and playback content or use the timeshift feature.

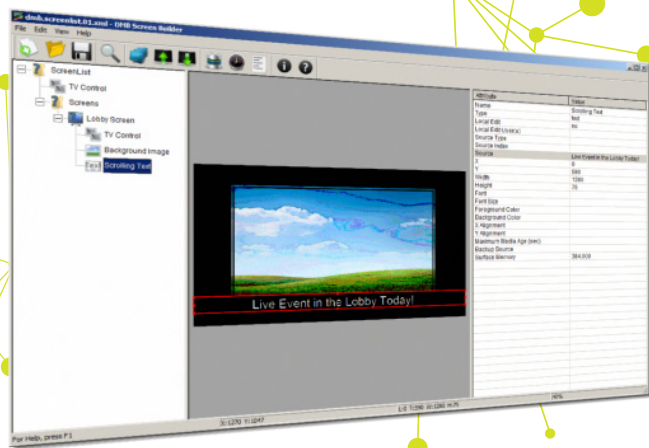
Specifications

Processor	STiH207	Image Formats	JPEG, PNG, BMP, GIF, RAW
Memory	512 Mb	Subtitles	DVB, SRT, text MKV
Flash Memory	256 Mb	Playlist Formats	M3U
Operating System	Linux 2.6.23	File Systems	FAT16/32, NTFS (reading), NFS, Ext2, Ext3
External Interfaces	Audio output S/PDIF, HDMI 1.4-output, Composite + stereo A/V output, Ethernet 100 Mb/s, USB 2.0 (WiFi-adapter can be connected)	Ethernet	10/100 Mb/s
Sources of Media Content	PC and NAS in local network, Stream media protocols (RTSP, RTP, UDP, IGMP, HTTP), USB-devices	Wi-Fi	optional USB module (not included)
The Web Browser	WebKit	Stream Media Protocols	RTSP, RTP, UDP, IGMP, HTTP
DRM Option	Secure Media	Software	Built-in Media Portal with WebKit-based IPTV-functionality HTTP 1.1, HTML 4.01 XHTML 1.0/1.1; DOM 1, 2, 3, CSS 1, 2, 3; XML 1.0, XSLT 1.0, XPath 1.0; SOAP 1.1; JavaScript ECMA-262, revision 5; Media JavaScript API; C layer SDK
Video Modes	1080i, 1080p, 720p, 576p, 480p, PAL, NTSC	Middleware Supported	Stalker, OFT-Media, Netup, SmartLabs, Netris, ZTE, Beenius
Video Codecs	MPEG1/2 MP@HL, H.264 HP@level 4.1, MPEG4 part 2 (ASP), WMV-9 (optional), VC1 video, XviD; 3D and HD video supporting (up to 40 Mbit / s and above)	Supports VoD	Espial-Kasenna, Bitband, ARRIS (C-Cor), Live555
Video Formats	MKV, MPEG-TS, MPEG-PS, M2TS, VOB, AVI, MOV, MP4, ASF, QT, WMV (optional)	Dimensions (WxDxH)	5 x 3.4 x 1.2 inches, 127 x 87 x 30 mm
Audio Codecs	MPEG-1 layer I/II, MPEG-2 layer II, MPEG-2 layer III (mp3), MPEG-2 AAC (optional), MPEG-4 AAC LC 2-ch/5.1ch (optional), MPEG-4 AAC+SBR 2-h/5.1ch (optional), Dolby Digital (optional), DTS (optional)	Weight	0.42 lbs, 190 g
Audio Formats	MP3, MPA, M4A, WMA (optional), Ogg, WAV, AAC	Packing List	MAG254/255 Set-Top Box, user manual, Mini jack cable to RCA (A/V), Power adapter 12V 1A, remote control, 2 AA batteries, packaging
		Warranty	12 months

8A 6 8][]W 'A YX]U'6f]X[Y

DMB Screen Builder

The DMB Screen Builder is a Windows application which lets a user graphically create and publish sets of digital signage and digital menu board screens. Using DMB Screen Builder a user can build, preview and distribute multiple channels of digital signage screens.



DMB Screen Builder Features

- ✓ Easily identify the digital signage media players in your network
- ✓ Build looping playlists with drag and drop functionality
- ✓ Create graphically rich Video-on-Demand interactive screens
- ✓ Build Touch Screen menus
- ✓ Design Digital Menu Board screens
- ✓ Add Live Video streaming
- ✓ Include local TV Controls (e.g., Turn TV on, set volume, etc.)