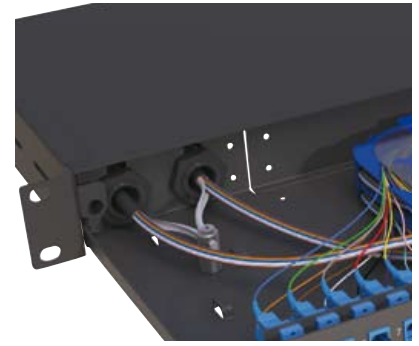
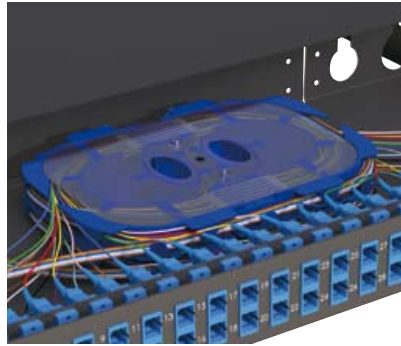


DfY!@cUXYX
: JYf`DUhW`DUbY`g



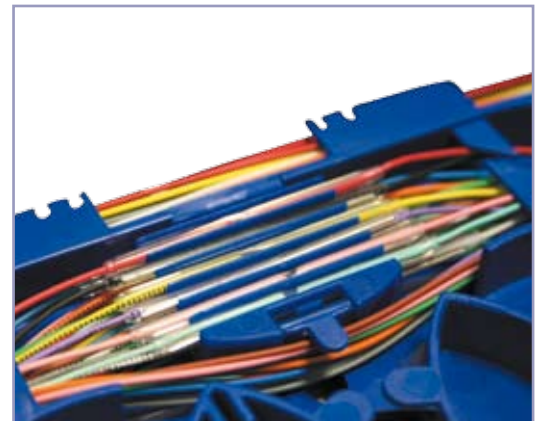
- ▶ Pre loaded with 1.5m pigtails as standard
- ▶ Colour coded
- ▶ The speedy splice tray allows storage of fibre with no need for stripping
- ▶ 30mm minimum bend radius maintained throughout
- ▶ Time saved on splice tray installation
- ▶ Pre cleaned
- ▶ Individual test certificates for each pigtail
- ▶ For use with heat shrink style splice protectors

Technical Specification

| <i>Sliding Patch Panels</i> | |
|-----------------------------|------------------------------------------------------------------------|
| Height | 1U (44.4mm) |
| Width | 483mm |
| Depth | 200mm |
| Net Weight | 2.5kg |
| Packaged Weight | 3 kg |
| Package Dimensions | 530mm W x55mm H x260mm D |
| IP Rating | IP20 |
| Suitable for adaptor type | SC Simplex, ST / FC, SC Duplex, E2000, LC Duplex |
| Mounting adjustment range | 50mm |
| Cable entry 20mm | 2 |
| Cable entry 25mm | 2 |
| Material | Cold Rolled Steel |
| Material thickness | 1.2mm |
| Material coating | Electrostatic Powder Coating |
| Colour | Black RAL 9004 |
| Operating Temperature | -40°C to +60°C |
| Compliant to | RoHS, Reach / SVHC |
| Designed in accordance with | TIA/EIA 568.C, ISO/IEC 11801, EN 50173, IEC 60304, IEC 61754, EN 297-1 |

Pigtail Installation Specification

| Element Number | Standard Colour Sequence | |
|----------------|--------------------------|--|
| | TIA 598-C / IEC 60304 | |
| 1 | Blue | |
| 2 | Orange | |
| 3 | Green | |
| 4 | Brown | |
| 5 | Slate/Grey | |
| 6 | White | |
| 7 | Red | |
| 8 | Black | |
| 9 | Yellow | |
| 10 | Violet | |
| 11 | Rose | |
| 12 | Aqua | |



For use with heat shrink style splice protectors