

SPEEDWAY

Fiber Splice Tray For Up To 24 Fibers

Introducing the revolutionary new FibreFab Speedway splice tray with unrivalled ease of use and flexibility. Featuring a unique external fibre pathway and pivoting splice holder arrangement this tray redefines the concept of splice management, combining fibre management and splicing control in one product. Due to its accommodating internal dimensions the Speedway splice tray is able to comfortably hold 24 splices with either heatshrink or crimp style splice protectors with up to 900µm buffered fibres.

Features

- ▶ Unique external fibre pathway allows easy storage of excess fibre and multi-directional routing of entry and exit fibres
- ▶ Spacious interior maintains 30mm fibre bend radius and allows storage of either 250µm or 900µm buffered fibre
- ▶ Internal management allows multiple fibre routing options including cross over
- ▶ Pivoting splice holders allow uninterrupted control of fibre prior to splicing and during rework
- ▶ Built in fibre pick can be used to withdraw individual fibres and can be stored in the tray after use
- ▶ Will hold up to 24 splices with either heatshrink or crimp style splice protectors
- ▶ Supplied with tray hinge to maintain access to splices with stacked trays
- ▶ Transparent clip in lid supplied with every tray
- ▶ Cable tie points to secure fibre on entry and exit
- ▶ Mountable via central hole, DIN style holes or double sided foam adhesive pad

Applications

- ▶ Fibre management
- ▶ Internal and external
- ▶ Wall boxes
- ▶ Patch panels

Technical Specification

Splice Tray	
Width	168mm
Depth	124mm
Height	13mm
Net weight	81g
Material	ABS
Colour	Blue
Operating temperature	-40°C to +60°C
Designed in accordance with	TIA/EIA 568.C, ISO/IEC 11801, EN50173, IEC60304, IEC61754, EN297-1
Compliant to	RoHS, Reach/SVHC

Ordering Information

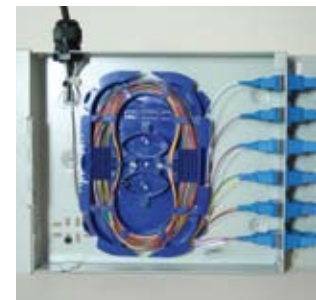
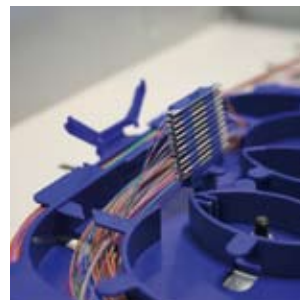
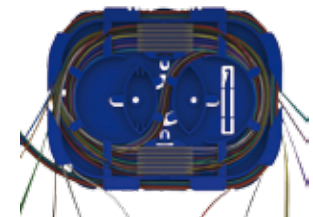
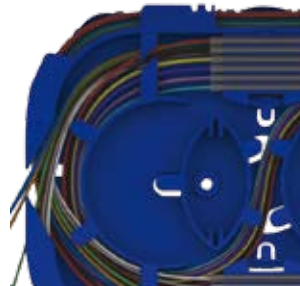
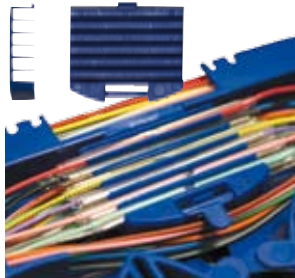
Splice Tray with Clear Lid	Part No.
Speedway Fibre Splice Tray Heat Shrink	SPT01
Speedway Fibre Splice Tray Crimp Style	SPT02

Design Registration Number 001274211

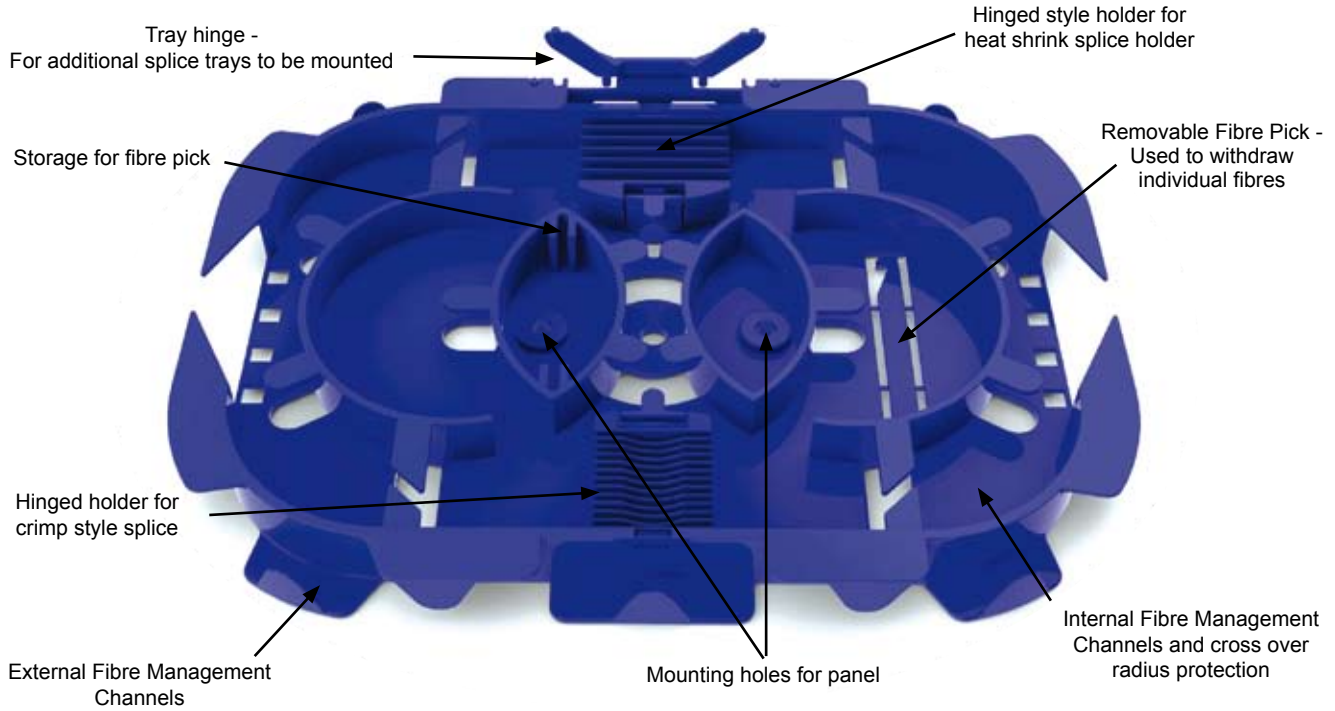
Stackable



Supplied with cassette lid



SPEEDWAY
Fiber Splice Tray For Up To 24 Fibers



Technical Drawing

