

# WRK-SA Series

## Stand-Alone Rack Enclosures



### WRK-SA = Stand-Alone Wider Rack

Like the WRK, the wider footprint of this rack series was designed for mounting equipment that uses more substantial cable bundles than would fit easily in a basic rack, or for greater cooling airflow. For stand-alone installations, this version features fixed solid sides.

Choose a WRK when these capabilities are required, and where seismic certification and solid sides are required or preferred.

#### Structural Features

- Fully welded construction for strength
- 24 1/4" overall width provides space for side cabling or cooling airflow
- Standard front and rear adjustable extra-wide, heavy-gauge, 10-32 threaded rack-rail with numbered rackspace increments speeds equipment mounting
- Beveled outside curves for strength and striking appearance
- Finished in a durable black textured powder coat

#### Thermal Management

- Comes with standard configurable rear door, compatible with optional cooling and filter kits
- Enclosure sides include top and bottom venting
- Solid (steel or plexi) and vented front door options are available
- Solid, vented and fan top options are available

#### Cable Management

- Standard front and rear adjustable, extra-wide rackrail features cable pass-throughs to facilitate front-to-rear cabling
- Multiple lacing points and slotted rail brackets for cable management flexibility

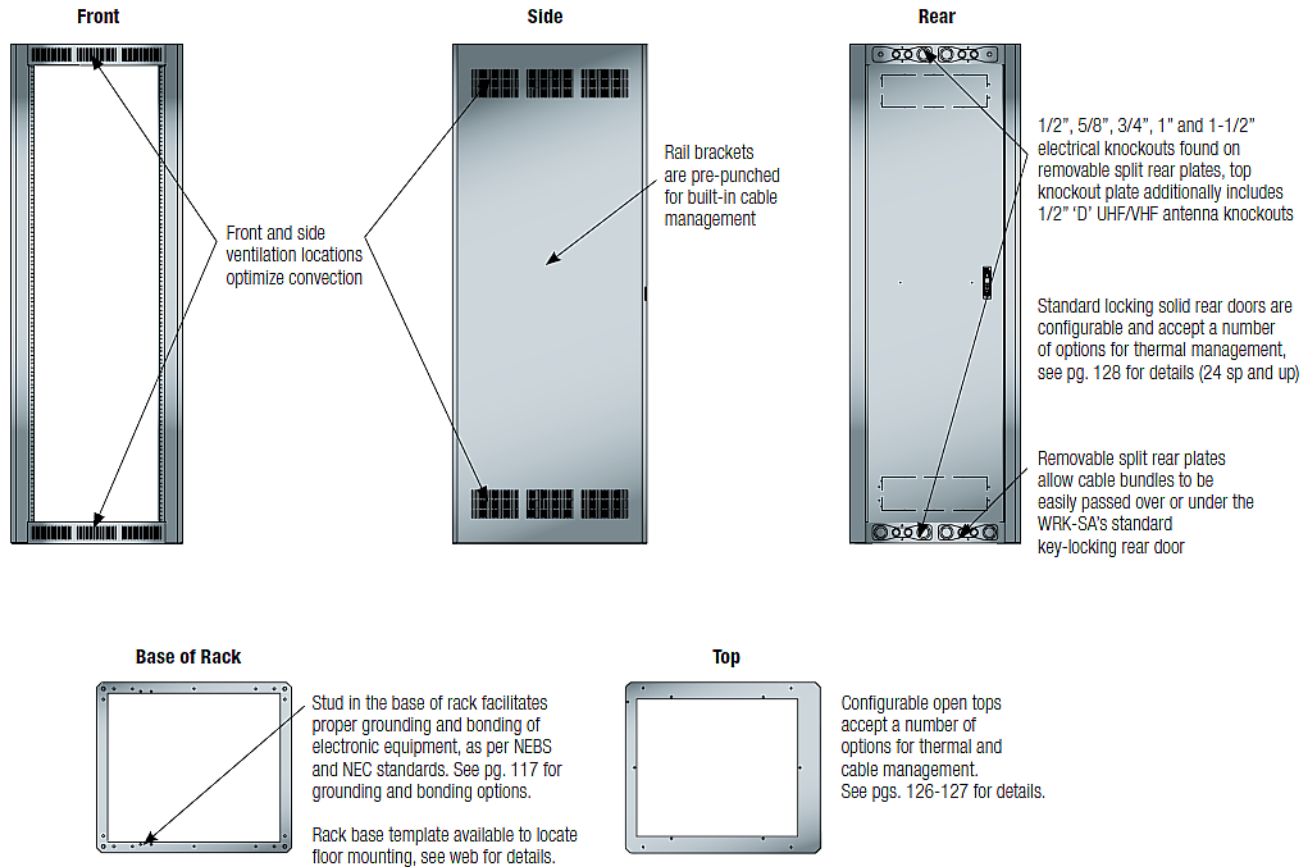
#### Regulatory / Certifications

- Static load capacity - 10,000 lbs.
- UL Listed in the US and Canada. UL Listed load capacity - 2,500 lbs.
- Seismic certified to the following codes and standards: 2007 & 2010 CBC; 2006, 2009 & 2012 IBC; ASCE 7-05 (2005 Edition) & ASCE 7-10 (2010 Edition) and the 2006 & 2009 editions of NFPA 5000 for use in areas of high seismicity – Zone 4 or Seismic Design Category (SDC) "D". These are designed for Mission Critical and/ or High-Importance Installations in locations with the highest level of seismicity and top floor or rooftop installations including those within UBC and CBC Essential facilities or IBC, ASCE 7, and NFPA 5000 Seismic Use Group III facilities. For all codes, the Importance factor (Ip) is 1.5. Seismic Certified load capacity of 900 lbs. when used with ERK-Z4 seismic floor anchor brackets.
- GREENGUARD Indoor Air Quality Certified for Children and Schools (the most strict level)

Part #	Racking Height	Overall Height	Useable Depth	Overall Depth	Overall Width	Caster Base	Additional 10/32 Threaded Rackrail
WRK-24SA-27	42" (24 space)	48-1/8"	25-3/4"	27-5/8"	24-1/4"	CBS-WRK-27	WRK-RR24
WRK-24SA-32	42" (24 space)	48-1/8"	30-3/4"	32-5/8"	24-1/4"	CBS-WRK-32	WRK-RR24
WRK-37SA-27	64-3/4" (37 space)	70-7/8"	25-3/4"	27-5/8"	24-1/4"	CBS-WRK-27	WRK-RR37
WRK-37SA-32	64-3/4" (37 space)	70-7/8"	30-3/4"	32-5/8"	24-1/4"	CBS-WRK-32	WRK-RR37
WRK-40SA-27	70" (40 space)	76-1/8"	25-3/4"	27-5/8"	24-1/4"	CBS-WRK-27	WRK-RR40
WRK-40SA-32	70" (40 space)	76-1/8"	30-3/4"	32-5/8"	24-1/4"	CBS-WRK-32	WRK-RR40
WRK-44SA-27*	77" (44 space)	83-1/8"	25-3/4"	27-5/8"	24-1/4"	CBS-WRK-27	WRK-RR44
WRK-44SA-32*	77" (44 space)	83-1/8"	30-3/4"	32-5/8"	24-1/4"	CBS-WRK-32	WRK-RR44

\*available without rear door, use suffix part # 'LRD'

# WRK-SA Series Stand-Alone Rack Enclosures



Part #	Front Doors				Rear Doors*				w/ (4) 4-1/2 Fans (380 CFM Total)	w/ (3) 6" Fans (660 CFM Total)	w/ (1) 10" Fan (550 CFM Total)	
	Solid	Plexi	25% Open Area Perf	64% Open Area Perf	Plexi Vented	64% Open Area Perf	79% Perf Split Door	Solid Top				Vented Top
WRK-24SA-27	FD-24	PFD-24	VFD-24	LVFD-24	--	--	--	MW-ST	MW-LVT	MW-4FT-380CFM	MW-6FT-660CFM	MW-10FT-550CFM
WRK-27SA-32	FD-24	PFD-24	VFD-24	LVFD-24	--	--	--	MW-ST	MW-LVT	MW-4FT-380CFM	MW-6FT-660CFM	MW-10FT-550CFM
WRK-37SA-27	FD-37	PFD-37	VFD-37	LVFD-37	--	--	--	MW-ST	MW-LVT	MW-4FT-380CFM	MW-6FT-660CFM	MW-10FT-550CFM
WRK-37SA-32	FD-37	PFD-37	VFD-37	LVFD-37	--	--	--	MW-ST	MW-LVT	MW-4FT-380CFM	MW-6FT-660CFM	MW-10FT-550CFM
WRK-40SA-27	FD-40	PFD-40	VFD-40	LVFD-40	--	MW-LVRD-40	--	MW-ST	MW-LVT	MW-4FT-380CFM	MW-6FT-660CFM	MW-10FT-550CFM
WRK-40SA-32	FD-40	PFD-40	VFD-40	LVFD-40	--	MW-LVRD-40	--	MW-ST	MW-LVT	MW-4FT-380CFM	MW-6FT-660CFM	MW-10FT-550CFM
WRK-44SA-27	FD-44	PFD-44	VFD-44	LVFD-44	PVFD-44	MW-LVRD-44	MW-CLRD-44	MW-ST	MW-LVT	MW-4FT-380CFM	MW-6FT-660CFM	MW-10FT-550CFM
WRK-44SA-32	FD-44	PFD-44	VFD-44	LVFD-44	PVFD-44	MW-LVRD-44	MW-CLRD-44	MW-ST	MW-LVT	MW-4FT-380CFM	MW-6FT-660CFM	MW-10FT-550CFM