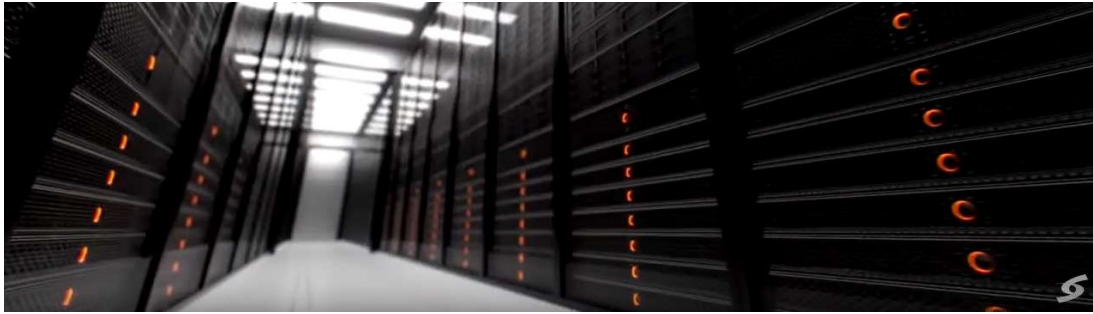




# DMG7000

## Software Transport Stream Gateway



### OVERVIEW

The DMG 7000 Transport Stream Gateway utilizes the latest software based platform from Sencore to deliver a highly flexible transport stream processor. Bridge the gap between unmanaged and managed networks with RIST/SRT/ZiXi and MPEG/IP workflows. Enable bulletproof transport stream distribution over the internet using advanced encapsulation methods like RIST, SRT and ZiXi. Being software based, the DMG 7000 can be deployed on COTS hardware in a variety of form factors as standalone software or virtual machine reducing CAPEX and OPEX expenditure and growing as hardware platforms evolve.

### APPLICATIONS

#### Content Distribution over the Internet

Enable low-cost distribution workflows using protocols like RIST/SRT/ZiXi on the open internet. Reduce OPEX and CAPEX of backhaul or backup networks.

#### Bridge Between Managed and Unmanaged Networks

Backhaul over the open internet with advanced encapsulation methods. Receive and transmit protocols such as RIST/SRT/ZiXi and MPEG/IP for broadcast workflows.

### KEY FEATURES

- **Transport Stream Gateway**
  - ✓ SRT protocol with AES encryption
  - ✓ MPEG/IP RTP and UDP as MPTS to SPTS
- **Software deployment on COTS hardware**
  - ✓ 1RU rack mount for dense applications
  - ✓ Small form factor for low density applications

### FUTURE FEATURES (subject to change)

- RIST transmit and receive
- ZiXi transmit and receive
- Multiplexing for MPEG/IP outputs
- FEC Support for input and output streams
- Transcoding and Transrating

### SPECIFICATIONS

#### Input and Output Options

Supported Protocols: SRT  
RIST (roadmap)  
ZiXi (roadmap)

MPEG over IP I/O\*:  
RJ-45 up to 1GB  
UDP or RTP  
CBR or Null-stripped TS  
SMPTE 2022/CoP3 FEC (roadmap)  
Unicast & Multicast  
IGMP v1/2/3  
SMPTE 2022-7 (roadmap)

### GENERAL

Management: RJ-45 Ethernet 10/100/1000  
Connector: HTTP, SNMP, Web API  
User Interfaces: Web-browser  
UI Firmware Updates: Via Web UI