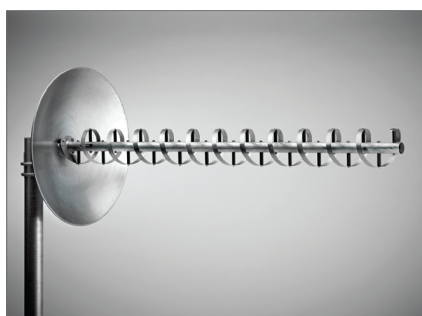


WH Series Helical Antennas



Product Features

WH14-69/24, WH14-69/32, WH14-69/43

Description

The Wade Helical Antenna is circularly polarized for CATV Off-Air reception. The WH14-69 covers the entire UHF band (470- 806 MHz), channels 14 through 69.

Available as a single antenna or a customized antenna array. Electrical performance of the WH14-69, along with the high quality of materials used in the construction of this antenna, have resulted in a superior performance and longevity even when exposed to the most extreme weather conditions.

ELECTRICAL SPECIFICATIONS

SPECIFICATION	WH14-69/24	WH14-69/32	WH14-69/43
FREQUENCY RANGE	470-806 MHz	470-806 MHz	470-806 MHz
GAIN (dBic)	17	18	19
GAIN (dBi)	14	15	16
NUMBER OF TURNS	12	12	12
VSWR MAX	1.9	1.9	1.9
VSWR TYPICAL	1.4	1.4	1.4
HPBW HORIZONTAL	30	27	24
HPBW VERTICAL	28	25.5	23
POLARIZATION	Circular	Circular	Circular
SIDELobe SUPPRESSION	15dB	16dB	17dB
F/B RATIO (dB)	>23	>25	>27
CROSS POLARIZATION SUPPRESSION	20dB	20dB	20dB
IMPEDANCE	75 Ohm	75 Ohm	75 Ohm
CONNECTOR	"F" Connector	"F" Connector	"F" Connector
MAX. INPUT POWER	25 W	25 W	25 W
TEMPERATURE (C)	-40 to +70	-40 to +70	-40 to +70

MECHANICAL SPECIFICATIONS

SPECIFICATION	WH14-69/24	WH14-69/32	WH14-69/43
OVERALL LENGTH	65"	65"	65"
HELIX DIAMETER	5.875"	5.875"	5.875"
GROUND PLANE DIAM.	24	32	42.67
STUB LENGTH	6.5"	6.5"	6.5"
STUB OD	1.5"	1.5"	1.5"
ANTENNA WEIGHT (lbs)	12	13	14
MOUNTING OPTION	Mast	Mast	Mast
MAST OD	2.5"	2.5"	2.5"

WIND LOAD SPECIFICATIONS

SPECIFICATION	WH14-69/24	WH14-69/32	WH14-69/43
WIND AREA (Sq. ft.)			
NO ICE *	1.64	1.94	2.32
1" RADIAL ICE **	3.68	4.02	4.42
WIND LOAD (ft. lbs)			
NO ICE *	143	169	203
1" RADIAL ICE **	93	102	122
SURVIVAL WIND SPEED (no ice)	180	165	151

*Wind Speed: 100mph

**Half Wind: 50mph

Specifications Subject To Change Without Notice

Rev 0101

© Toner Cable Equipment, Inc.