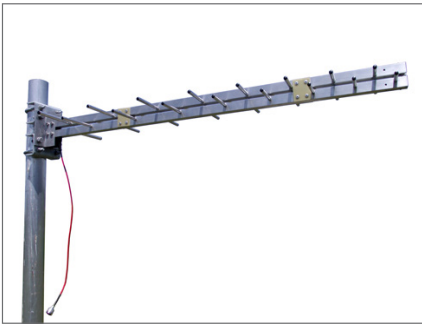


K @/! * - #G G]b[`Y1 <: 5bhYbbU



WL 14-69/S

WADE™

A N T E N N A

Description

A single broadband UHF model provides optimum performance over the desired band. The 75 Ohm feed point is sealed within the boom. A short length of cable is fitted with a standard "F" connector for connection to the down lead. This light weight, high quality antenna is small in size and big on performance.

ELECTRICAL SPECIFICATIONS

SPECIFICATION	WL 14-69/S
FREQUENCY RANGE	470-800 MHz
CHANNELS	14 to 69
GAIN	11 dBi
IMPEDANCE	75 Ohm
VSWR	<1.25:1
FR:BK RATIO	>25 dB
POLARIZATION	H or V
H. BEAM WIDTH	46 deg.
V. BEAM WIDTH	65 deg.
SIDE LOBE SUPPRESSION	>30 dB
CONNECTORS	"F" Connector
STD. MOUNT	3/8" U-bolts to fit 2-7/8" O.D. Pipe

Where interfering signals such as co-channel, adjacent channel and ghosting are present, custom arrays can be designed to reduce the level of interference by as much as 40 db in most cases.

MECHANICAL SPECIFICATIONS

SPECIFICATION	WL 14-69/S
BOOM LENGTH	45.25"
WEIGHT (lbs.)	
NO ICE *	5.8
1" RADIAL ICE **	35
WIND LOAD (lbs)	
NO ICE *	23
1" RADIAL ICE **	15
WIND TORQUE (ft. - lbs.)	
NO ICE *	43.5
1" RADIAL ICE **	28.5
WIND LOAD AREA (sq. ft.)	
NO ICE *	0.63
1" RADIAL ICE **	1.42

*Wind Speed: 100mph

**Half Wind: 50mph

OVERALL DIMENSIONS

SPECIFICATION	WL 14-69/S
NUMBER OF ELEMENTS	16
BOOM LENGTH (A)	45.25"
BOOM LENGTH (B)	2.675"
SHORTEST LENGTH (C)	3.675"
LONGEST ELEMENT (D)	11"

