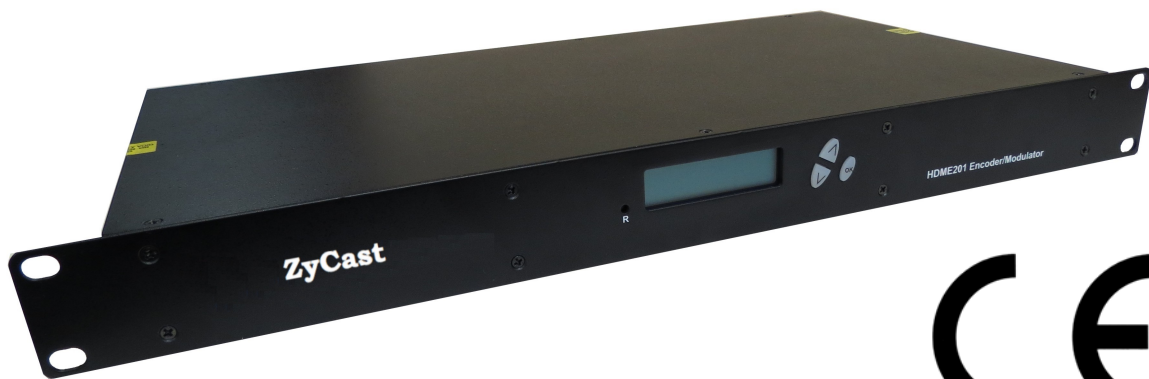




HDME Series

HD Encoder / QAM Modulator

***Single, Dual & Quad Program Encoders
with Internal Multiplexer / QAM Modulator***



The HDME is a perfect solution for Small Cable Systems, Hotels, Motels, Sports Bars, Casinos, Restaurants, Gyms, Schools, Industrial or Commercial Applications and anywhere an A/V - Digital source needs to be added to a TV system.

The HDME Series Encoder / Modulators are high performance HD encoders with multiple outputs. They take an HDMI or Component input, encode it in MPEG2 or H.264 (MPEG4) with Dolby AC-3 audio encoding and then modulate these program(s) on a standard QAM channel. They also feature both an ASI output and an IP output which are active along with the QAM at the same time. The HDME102 will encode one program on a single QAM, the HDME202 will encode two programs on one QAM and the HDME402 will encode four programs on two QAM's. Also featured is an EAS function with composite video input.

Features:

- One, Two, or Four Program Encoder / QAM Modulator
- Multiplex the Programs on One or Two QAMs
- Frequency Agile QAM Channel, from Channel 2 to Channel 135
- 45 dBmV RF Output Level
- Virtual Channel Numbering
- Short Program Name (7 Digits)
- 40 dBmV MER
- Rack Mount
- Remote GUI for Management and Control
- Compression Codec MPEG2 or H.264
- EAS Program Interface
- Closed Caption Supported (708)
- ASI Output
- IP Output

HDME Series

HD Encoder / QAM Modulator

Specifications

INPUT	HDME102	HDME202	HDME402
Input Connectors	HDMI input (Video+Audio)	HDMI input (Video+Audio) x2	HDMI input (Video+Audio) x4
	Y, Pr, Pb Component input (Video)	Y, Pr, Pb Component input (Video) x2	Y, Pr, Pb Component input (Video) x4
	Composite input (Video)	Composite input (Video) x2	Composite input (Video) x4
	L / R Channel Audio input(Audio)	L / R Channel Audio input (Audio) x2	L / R Channel Audio input (Audio) x4
Video Input Level	0.7 – 1.4V (peak-to peak)		
Video Mode	480i,480p,576i,576p,720P50,720P60,1080i50,1080i60		
Audio input	Stereo /Digital		
Audio Input Level	0.4 – 0.8V (p-to-p)		
Input Impedance	75Ω		
OUTPUT			
Frequency Range	54-864MHz (2-135)		
Output Level	45 dBmV		
Output Impedance	75 ohm, J.83 Annex B		
Channel Bandwidth	6MHz		
MER	> 40 dB typical		
ASI Output	BNC 75, MPTS Transport Stream, 188 Mbits		
IP Output	RJ-45, GigE, Unicast / Multicast, MPTS or SPTS (one program)		
Channel Type	STD, IRC, HRC		
VCN	Virtual Channel Tables 2-16383, CVCT or ATSC Mode VCVT		
MODULATION			
Video Resolution	1080i /720p/576i/576p/480p/480i1080p @MPEG-AVC		
Video Compression	AVC MP@Level4 /MPEG2 MP@HL		
Audio Compression	MPEG1 Layer II/ AAC (Advanced Audio Codec), supports Dolby Digital		
Constellations	64 QAM / 256 QAM		
Control/Monitoring			
Front Panel LCD Control	Yes		
Remote Setup Functions	Yes		
Remote Monitoring /Status	Yes		
EAS Control	Dry Contact, Contact Closure Activation		
EAS Content	Composite Video, L/R Audio		
GENERAL			
Power Supply	12 VDC3Amp		
Consumption	1300 mA	1700 mA	2700 Ma
Languages	English		
Dimensions	482.7mm x 240mm x 44.4mm(19" x9.45" x1.75")1RU		
Weight	6.85 lbs	7.05 lbs	9.20 lbs