



CynerG² *Dual* Program Digital SD or HD Character Generator

TONER
 cable equipment, inc.
 969 Horsham Road
 Horsham, Pennsylvania 19044 USA

CynerG²

Dual program digital SD or HD Character Generator system for your complete production needs



Dual-Channel Systems in HD-SDI, HD Ready, SD-SDI and Analog

Compix CynerG² is the premium broadcast quality solution for your real time graphics needs. CynerG² systems offer upgrade options that make them perfect for any 4:3 or 16:9 aspect ratio environment working in HD, SD-SDI or analog video, all with stunning output quality. The CynerG² line-up provides you with the easy to use broadcast quality graphics you need today, with an elegant upgrade path for your future CG needs.

Twice the Power, Not Twice the Price

Dual channel CynerG² systems are all about giving you the power of two systems in one chassis, for 40% less than the cost of two separate systems. Use the power of both channels to create multiple overlays with our built-in downstream keyers, and add to the visual interest of your graphics output with over 260 built in page to page transitions including dissolves, credit rolls, crawls and reveals. Two completely different streams with separate graphic looks can run from each channel, with lower thirds and full screens on the first channel, and with our included NewsScroll application, add ticker crawls, a logo, plus time and temperature on channel two.

Pay For Just the Power You Need Now

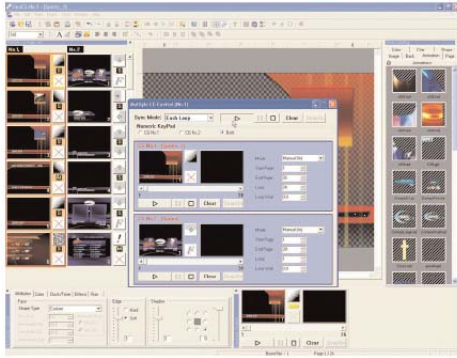
You have a long term plan for your facility formats, but you only have the capital to update your old equipment. Compix makes it simple for you to grow from SD-SDI to full HD-SDI with the CynerG² HD Ready configurations, and moving from analog to SD-SDI is just as easy, with a simple firmware update. Using the included GenCG graphics creation and playback software for all resolutions, with 4000 True Type fonts pre-loaded, bundled backgrounds, elements and templates ready to go, the possibilities are endless.

COMPIX CynerG² PRODUCT HIGHLIGHTS:

- Intuitive GUI with WYSIWYG layout
- 260+ effects including roll, crawl and reveal
- Multilingual support
- Icon-based drag-and-drop tools
- Use upstream or downstream of switcher
- Logo generation with included NewsScroll - up to two data crawls automatically updated from text files or RSS feeds
- Automation and third-party interfacing capability via optional AutoCast application, for automated and semi-automated use.
- Free offline graphics license with registration
- Pre-assembled, pre-configured turnkey systems
- Includes GenCG, NewsScroll, Scheduler Suite, 4,000 true type fonts, 100 backgrounds, 100 textures and pre-built templates

CynerG² Broadcast Graphics System

Telephone:	Nationwide:	Fax:	E-mail:	Internet:
215-675-2053	800-523-5947	215-675-7543	info@tonercable.com	http://www.tonercable.com



Dual Channel Playback

CynerG2 gives the user total control of playback for both channels simultaneously with the Multi-Playback window. Dual channel operation is combined into a single elegant interface.

CynerG² HD

2-channel HD-SDI/SD-SDI broadcast graphics system. SMPTE 292M/259M compliant I/O. 1080i and 720p HD with two full featured CG channels, can be used with or without a video switcher.

CynerG² HD Ready

2-channel SD-SDI broadcast graphics system upgradeable to CYNERG2 HD via firmware. Contains same hardware as HD system.

CynerG² SD-SDI

2-channel SD-SDI and analog broadcast graphics system. SMPTE 259M and 170M compliant I/O, use with or without a video switcher. Supports SD 16:9 and 4:3 aspect ratios. Not upgradeable to HD.

CynerG² Analog

2-channel analog broadcast graphics system upgradeable to full CYNERG2 SD-SDI via firmware. Contains the same hardware as CYNERG2 SD-SDI. Not upgradeable to HD.

CynerG² HD and HD Ready Video I/O Standards Supported

SD-SDI

SMPTE 259M
(both 4:3 and 16:9 supported)

HD-SDI (option for HD Ready)

SMPTE 292M
1920x1080i (60/59.94/50)
1280x720p (60/59.94/50)

Input

(2) SD-SDI, Passes VBI
(2) HD-SDI, Passes HANC and VANC
(option for HD Ready)

Output

(2) SD-SDI key and fill
(2) HD-SDI key and fill (option for HD Ready)
(2) DVI-D Display Monitor

System Genlock

SD-SDI, BB
HD-SDI, BB, Tri-level Sync
Internal, Input video

CynerG² SD-SDI and Analog Video I/O Standards Supported

Analog

SMPTE 170M
NTSC 720x486
PAL 720x576
SD-SDI (option for Analog)
SMPTE 259M
(both 4:3 and 16:9 supported)

Input

(2) Composite, YPbPr, Y/C, Passes VBI
(2) SD-SDI, Passes VBI (option for Analog)

Output

(2) Composite, YPbPr, Y/C fill
(2) Composite key
(2) SD-SDI key and fill (option for Analog)
VGA and DVI-D Display Monitor

System Genlock

Reference Input (BB or CVBS)
Internal, Input video

CynerG² All Systems Minimum System Specifications

CPU

Intel Core 2 Duo 3.33 GHz

OS

Windows XP Professional

RAM

2GB

Hard Drive

320GB SATA HDD (7200RPM)

Optical Drive

22x DVD-RW
All in 1 Internal Card Reader

Ports

1 Ethernet 1000BaseT (RJ-45)
1 RS-232 (DB9)
6 USB 2.0

Power Specifications

Power Supply : 500W
110/220 Volt 60/50 Hz (Auto-sense)
Dual redundant hot swappable supplies
(Option for all configurations)

Physical Dimensions

4RU rack mount chassis
Height : 7 inches (17.78cm)
Width : 19 inches (48.26cm)
Depth : 20 in (50.80cm)
Weight : 36½lb (16.55kg)