

toner
RS Series

Black Ventilated Rack Shelves

The Toner RS series of rack shelves are industry standard 19" rack shelves for mounting items in relay racks or cabinet type racks. The shelves are available in several sizes, 1RU (1.750") 2 RU (3.50") and 3 RU (5.25") and all are of a slotted shelf design for both ventilation and mounting of equipment. These equipment shelves (except the RS-1906S) feature a 3/16" lip at the front and back for increased strength and also to prevent equipment from falling off. All the shelves are black powder coated. A optional SRB-1 bracket is available to hold DSS type satellite receivers upright. The bracket engages in the slots in the rack shelf.

Features

- Standard 19" Wide Rack Shelves
- 1RU, 2RU, and 3RU Sizes
- All with Ventilation / Mounting Slots
- 16 Gauge Cold Rolled Steel (RS-1906S, RS-1915S, RS2915S)
- 14 Gauge Cold Rolled Steel (RS-3915S)
- Black Powder Coated Finish
- Standard EIA Mounting

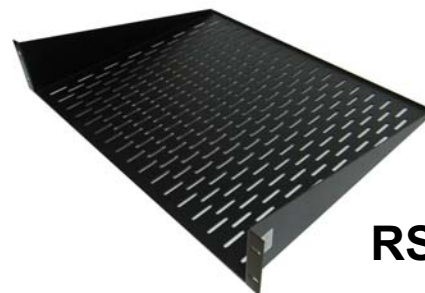
Model	Size
RS-1906S	1RU - 1.75 H x 17.625" W x 6"D
RS-1915S	1RU - 1.75 H x 17.625" W x 15"D
RS-2915S	2RU - 3.5 H x 17.625" W x 15"D
RS-3915S	3RU - 5.25 H x 17.625" W x 15"D
RS-SRB-1	Optional Receiver Bracket to Hold Multiple DSS Receivers on Edge



RS-1906S



RS-1915S



RS-2915S



RS-3915S

RS-SRB-1
 Optional Receiver
 Bracket to Hold
 DSS Receiver

**Patent Pending*

