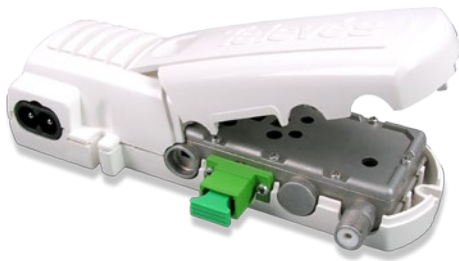


231180

Mini Optical Node



The 231180 Optical Node is a low-cost, compact, indoor CATV receive-only fiber optic node. It is designed with the latest optical receiver technology to receive RF broadband signals in an HFC (hybrid fiber/coax) or PON (passive optical network) broadband CATV environment.

The Televés 231180 node is ideal for fiber reception of CATV RF signals in FTTH, FTTx, and other applications where a cost effective, compact indoor node is required.

The 231180 offers good optical sensitivity, 20 dBmV RF output level, indoor power and optical level LED indicator.

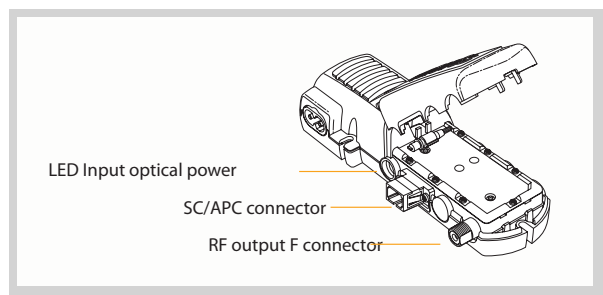
✓ Product highlights

- **Includes OLC** (Optical Level Control), the device automatically adjusts its parameters in order to achieve a balanced signal at the output and this signal level won't depend on the number of TV channels being transmitted.
- **Output C/N > 52dB.**
- **Low consumption** (1,7W).

✓ Main features

- Ideal for **RF Overlay / FTTx** applications.
- Provides information, a set of LED lights will indicate the input optical power.
- Compact, size of a domestic amplifier.

✓ Description



RF output		
RF connectors	type	F
Bandwidth	MHz	47- 1006
Impedance	Ohm	75
Return losses	dBm	> 11
Flatness	dB	± 1,5
Typ. level of self-regulated RF output	dBmV	20
CNR	dB	> 51
Optical input		
Wavelength	nm	1200 - 1600
OLC range	dBm	-8 ... +1
Max optical input power	dBm	2
Min. input optical power recomm.	dBm	-10
Optical return losses	dB	> 40
Optical input connector	type	SC/APC
Optical device	type	InGaAs pin photodiode
General		
Mains voltage	V~	108-132
Max. current	mA	19
Max. power	W	1,7
Operating temperature	°F	23 ... 113
Protection index		IP20