

RCS100

Advanced Remote Monitoring System for DVB-C



Professional Monitoring:

RF Analysis

- Real-time spectrum
- Two ways of operation: channel analysis or multiple channel polling
- PWR, MER, BER signal quality measures.
- Alarm log (Real Time) and representation (Time Evolution)

TS Analysis

- Bitrate analysis
- Table repetition and Quality analysis
- Services treeview
- Level 1, 2 priority error analysis as TR 101 290 recommendations

And much more...

- Video thumbnails
- Local display of measurements and alarms
- ASI Input/Output and HDMI audio/video output
- Ethernet connectivity
- 1 PPS & 10 MHz synchronization inputs
- HTML5 control application
- SNMP v2.0 alarms

Optional Features

- IP (TSoIP) INPUT
- Additional DVB Standard
- Full historical measurements with alarm analysis
- Advanced measurements (Full Spectrum, Constellation)
- Extended TS Analysis (3rd priority errors, PCR Jitter)
- TS Recording
- Live Streaming

RCS100 Advanced Remote Monitoring System for DVB-C

Management System

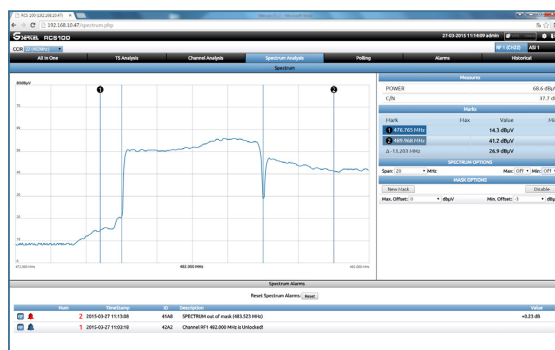
Web browser accessible control and presentation environment



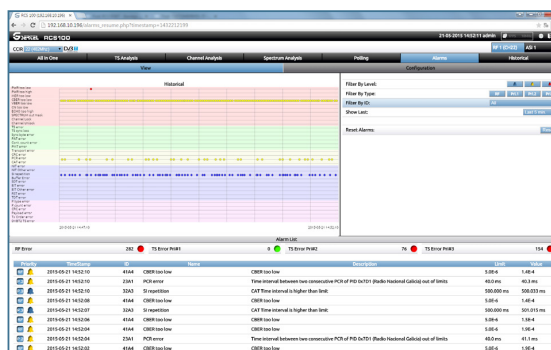
All In One
Shows an overview of the channel status on one screen. It shows spectrum, services, measures, alarms, Pids, All integrated in a single view for quick analysis.



Polling
Continuous measuring of a user-defined number of channels.



Full Spectrum (opt.)
Represents realtime spectrum of the monitored channel with detailed measures Mask, max. hold and min. hold features.



Alarms
Represents the alarms counter during an user-selected period of time

Specifications

Standards

- ETSI TR 101 290
- ETSI EN 300 429 (DVB-C)

Inputs

- RF: 1 x 75 Ω C connector

- RF Input frequency:
47MHz a 1GHz

- SYNC: 1 x 1PPS BNC 50 Ω
10MHz BNC 50 Ω

- TS: 1 x ASI IN BNC 75Ω.

- IP: 1 x GE RJ45 (TSoIP) (opt)

Outputs

- TS: 1 x ASI OUT BNC 75Ω
- A/V: 1 x HDMI

RF Measurements

- 20 MHz Spectrum
- Power, C/N
- MER
- BER (Annex A/C)
- PreBER (Annex B), PostBER (Annex B)
- Constellation (opt.)
- Full Spectrum (opt.)

MPEG Measurements

- Level 1,2 and 3 priority errors (Level 3 opt.) TR 101 290
- Alarms Log Analysis.
- PCR Jitter (opt.)

IP flow Measurements (opt.)

- Packet arrival max. & min
- IP & UDP payload bitrate
- Media loss rate
- Loss IP frames
- Corrected IP frames

Mechanical characteristics

- 1U 19" rackable unit.
- Size: 482mm W x 348mm D x 41mm H
- Working temperature 0 a 40 °C
- Storage temperature 0 a 50 °C

Electrical characteristics

- Input 100 - 240 VAC 50-60Hz 1.4A

Interfaces

- 1 x USB 2.0
- 1 x Ethernet RJ45
- LCD Graphic display
- HDMI

Control protocols

- HTML and SNMP