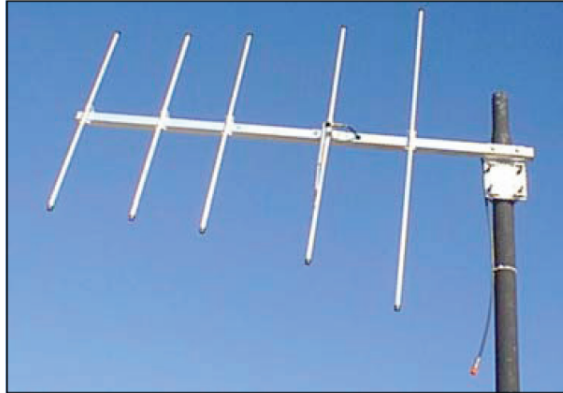
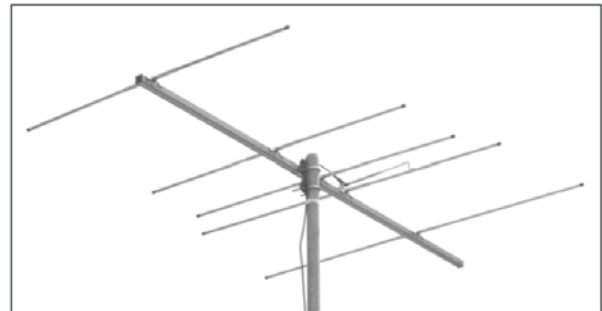


**J56-162**  
**J55-FM**

**EAS Antennas**



**Model J56-162**



**Model J55-FM**

**ELECTRICAL**

MODEL	J56-162	J55-FM
Frequency	162 MHz ( $\pm 4\%$ )	88-108 MHz
Gain	10 dBi	8-9 dBi
VSWR	<1.5:1	<1.5:1
Front-to Back Ratio	18 dB	18 dB
Beam-Width H Plane	78 Degrees	100 Degrees
E Plane	58 Degrees	57 Degrees
Polarization	Vertical	Horizontal
Terminal Type	F Female	F Female
Impedance	75 Ohm	75 Ohm

**MECHANICAL**

MODEL	J56-162	J55-FM
Length	45" (114 CM)	86 3/4" (220 CM)
Width	39" (99 CM)	54" (137 CM)
Weight	5 LBS (2.3 KG)	8.5 LBS (3.9 KG)
Mounting	CANTILEVER 1.5" - 2" O.D. MAST	CENTER MOUNT 2" O.D. MAST
		WCM-1 Cantilever Mount Kit