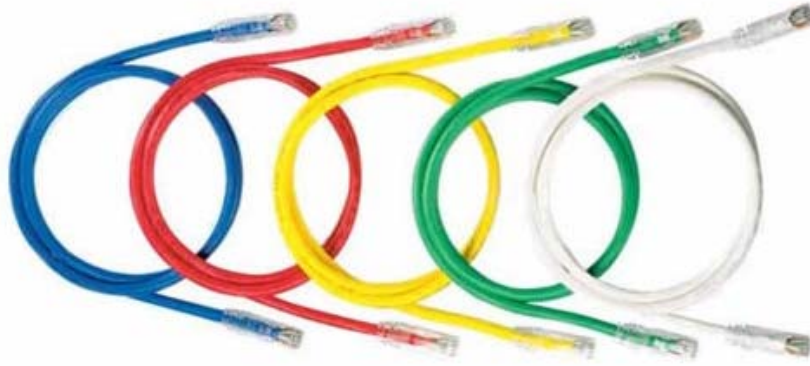


THOR DIGITAL

CAT6S Series

Category 6 Patch Cords, 550 MHz Shielded Network Cable



The Thor Digital CAT6 jumpers are premium cables for all network connectivity applications. These CAT6 patch cords feature shielding for optimum interference protection which is especially important when transporting digital video.

They have a low profile snagless boot for ease of use and protection of the connector latch tab. Compatible with both TIA 586A and 586B wiring configurations.

These LAN patch cords are ideal for use in the home or business where a reliable and quality network jumper cable is needed such as cable modems, IP connections, IPTV, digital video or any other ethernet system.



Ordering Information

Model	Description	Length Options (feet)
CAT6SBK*	CAT6 shielded patch cord, black jacket	3, 6, 8, 10, 14 *
CAT6SYL*	CAT6 shielded patch cord, yellow jacket	3, 6, 8, 10, 14 *
CAT6SRD*	CAT6 shielded patch cord, red jacket	3, 6, 8, 10, 14 *
CAT6SBL*	CAT6 shielded patch cord, blue jacket	3, 6, 8, 10, 14 *
CAT6SG7*	CAT6 shielded patch cord, grey jacket	3, 6, 8, 10, 14 *

Replace the * in the model with the length, for example: CAT6SRD8 is a red, 8 foot long patch cord.

Category 6 Patch Cords, 550 MHz Shielded Network Cable

Specifications

Applications

Telephony Voice Wiring, Network T Base 10 / 100 / 1000, Digital Video, IPTV, UL Subject 444, EIA / TIA568 & ISO / IEC 11801

Construction

Center Conductor	4 pairs 0.0226" (23 AWG) stranded bare copper
Dielectric:	0.0403" PE
Separator Cross:	PE
Shield:	AL / PE laminated tape
Outer Jacket:	0.248" PVC
Connector:	RJ-45

Electrical Characteristics at 20°C

Conductor Resistance (Max):	98.6 Ω / km
Insulation Resistance (Min):	5000 M Ω / km
Capacitance:	< pF / m
Impedance:	100 Ω ($\pm 15\%$)
Operating Temperature:	-20 to +65°C

• PVC - Polyvinylchloride • AWG - American Wire Gauge • AL / PE - Aluminum / Polyethylene