



ConverG¹ *Single* Program Digital SD or HD Character Generator

TONER
cable equipment, inc.
969 Horsham Road
Horsham, Pennsylvania 19044 USA

ConverG¹

Single program digital SD or HD character generator system for any type of application



Compix ConverG¹ Is One of a Kind

When you need a character generator, with no other bells or whistles that drive up the cost and slow you down, the industry proven multi-format ConverG¹ is ready to go. All ConverG¹ configurations feature standard rolls, crawls, over 260 transition effects, and a user definable clock and timer. The system comes with bundled backgrounds, shapes, templates and 4000 preloaded True Type fonts to make design work a snap. You can setup an entire graphics look offline, and then take those graphics immediately to air, while at the same time editing the next on air series in VGA preview.

Single-Channel Configurations in HD, HD Ready, SD-SDI and Analog

The ConverG¹ lineup provides you with the graphics you need today, with an elegant upgrade path for your future. Using the multi-format GenCG graphics creation, layout and playback software, packed with 4000 pre-loaded 4000 True Type fonts, with bundled backgrounds, elements and templates, all included. Compix ConverG¹ system upgrade options make a perfect fit for any 16:9 or 4:3 aspect ratio environment working in HD, SD-SDI or analog video, all with full broadcast quality output.

Why Future Proof?

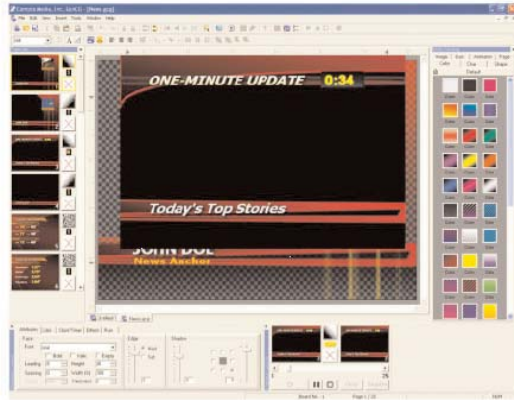
Work in the video format you need now, and leave your upgrade money in the bank. Compix makes it simple for you to grow from SD-SDI to full HD-SDI with the ConverG¹ HD ready configurations, and moving from analog to SD-SDI is just as easy, all with a simple firmware update. The ConverG¹ systems offer a unique set of upgrade options that make it perfect for any video production environment working in any combination of HD, SD-SDI or composite video now, and covers your needs that will require an upgrade in the future.

COMPIX ConverG¹ PRODUCT HIGHLIGHTS:

- Icon-based drag-and-drop tools
- 260+ effects including roll, crawl and reveal
- Multilingual support
- Intuitive GUI with WYSIWYG layout
- Use upstream or downstream of switcher
- Logo generation with optional NewsScroll - up to two data crawls automatically updated from text files or RSS feeds
- Automation and third-party interfacing capability via optional AutoCast application, for automated and semi-automated use.
- Free offline graphics license with registration
- Pre-assembled, pre-configured turnkey systems
- Includes GenCG, Scheduler Suite, 4,000 true type fonts, 100 backgrounds, 100 textures and pre-built templates

ConverG¹ Broadcast Graphics System

Telephone:	Nationwide:	Fax:	E-mail:	Internet:
215-675-2053	800-523-5947	215-675-7543	info@tonercable.com	http://www.tonercable.com



Style Catalogs for Quick Access

GenCG makes graphic creation fast and easy with Compix style catalogs, with often used graphic elements like backgrounds, animations, fonts, and complete templates available to get the proper preset look to air quickly - with all of the pieces in all of the right places.

ConverG¹ is available in 4 configurations:

ConverG¹ HD

Single channel HD-SDI/SD-SDI broadcast graphics system. SMPTE 292M/259M compliant I/O. 1080i and 720p HD with one full featured CG channel, can be used with or without a video switcher.

ConverG¹ HD Ready

Single channel SD-SDI broadcast graphics, SMPTE 259M compliant, system upgradeable to ConverG¹ HD via firmware. Contains same hardware as HD system. Usable with or without a video switcher.

ConverG¹ SD-SDI

Single channel SD-SDI and Analog broadcast graphics system. SMPTE 259M compliant I/O, use with or without a video switcher. Supports SD 16:9 and 4:3 aspect ratios. Not upgradeable to HD.

ConverG¹ Analog

Single channel analog broadcast graphics system upgradeable to full ConverG¹ SD-SDI via firmware. Contains the same hardware as the ConverG¹ SD-SDI. Not upgradeable to HD.

ConverG¹ HD and HD Ready Video I/O Standards Supported

SD-SDI

SMPTE 259M
(both 4:3 and 16:9)

HD-SDI (option for HD Ready)

SMPTE 292M
1920x1080i (60/59.94/50)
1280x720p (60/59.94/50)

Input

(2) SD-SDI key and fill
(2) HD-SDI key and fill (option for HD Ready)
System Genlock
SD-SDI, BB
HD-SDI, BB, Tri-level Sync
Internal, Input video

ConverG¹ SD-SDI and Analog Video I/O Standards Supported

Analog

SMPTE 170M
NTSC 720x486
PAL 720x576

SD-SDI (option for Analog)

SD-SDI (option for Analog)
SMPTE 259M (both 4:3 and 16:9 supported)

Input

Composite, YPbPr, Y/C, Passes VBI
SD-SDI, Passes VBI (option for Analog)

Output

Composite, YPbPr, Y/C fill
Composite key
SD-SDI key and fill (option for Analog)

System Genlock

Reference Input video (BB or CVBS)
Internal, Input video

ConverG¹ All Systems Minimum System Specifications

CPU

Intel Core 2 Duo 2.33 GHz

OS

Windows XP Professional

RAM

1GB

Hard Drive

320GB SATA HDD (7200RPM)

Optical Drive

22x DVD-RW
All in 1 Internal Card Reader

Ports

1 Ethernet 1000BaseT (RJ-45)
1 RS-232 (DB9)
6 USB 2.0

Power Specifications

Power Supply: 500W
110/220 Volt 60/50 Hz (Auto-sense)
Dual redundant hot swappable supplies
(Option for all configurations)

Physical Dimensions

4RU rack mount chassis
Height: 7 inches (17.78 cm)
Width: 19 inches (48.26 cm)
Depth: 20 inches (50.80 cm)
Weight: 36 1/2 lb (16.55 kg)