



MEC

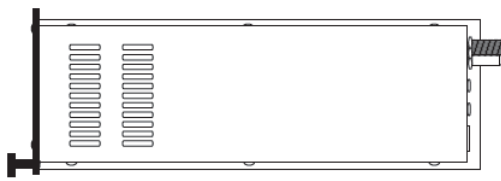
MPEG-2 Encoder

Features

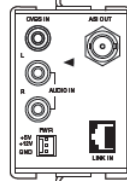
- 2RU Modular design with low power consumption
- Analog composite video input in NTSC/PAL format
- 4:2:0 MP@ML video compression from 2.5 to 15 Mbps
- Analog stereo audio input
- MPEG-1 layer2 or Dobby® Digital (AC3) audio compression
- ISO/IEC 13818-1 PAT and PMT tables with Single Program transport stream (SPTS) output transport stream
- Local control via front panel display and keys
- Remote control via supplied utility



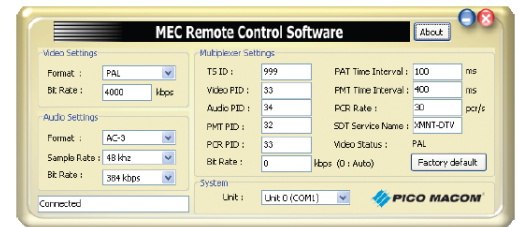
Front View



Side View



Rear View



MEC Remote Control Software

Specifications

VIDEO INPUT

Input interface
Signal Composite (NTSC/PAL)
Connector RCA Jack (Yellow)
Level 1 Vp-p, 75Ω Unbalanced

ENCODING

Type MPEG-2 MP@ML
Supported Resolution 720 x 480 (NTSC)
720 x 576 (PAL)
Frame Rate 29.97 (NTSC)
25 (PAL)

AUDIO INPUT

Input Interface
Signal Stereo
Connector RCA Jack (Red, White)
Level 2Vrms max.

ENCODING

Type MPEG-1 Layer 2 or Dolby Digital (AC3)
Sampling Rate 32/44.1/48 KHz
Mode MPEG-1 Layer 2: Stereo/Joint Stereo/
Dual Channel /Single Channel
Bit Rate MPEG-1 Layer 2: 32 to 384 Kbps
Dolby Digital (AC3): 128 to 448 Kbps

OUTPUT

Output Interface DVB-ASI
Connector BNC
Level 800 mVpp Nominal, 75Ω

MULTIPLEX

Type ISO/IEC 13818-1 PAT and PMT tables with
Single Program Transport Stream (SPTS)
Bit Rate Up to 19.2 Mbps

CONTROL

Local Operation 8x2 LCD Display & Five front control keys

REMOTE OPERATION

Connector (PC) RS232 (UNIT) RJ-11
Interface Supplied Utility
Power Consumption 12V/0.486A
5V/0.760A

MECHANICAL

Dimension 2" (W) x 3.5" (D) x 10" (H), (52.8 x 88 x 254 mm)
Weight 1.6 lbs (0.726 kg) approx

Ordering Information

MEC MPEG-2 Encoder