

ERK Series Stand-Alone Gangable Rack Enclosure



ERK = Economical Rack

This economical stand-alone rack can also be ganged to create partitioned multi-bay installations for thermal management control, future growth, or other purposes.

Specify an ERK when a strong, basic rack is required, and where seismic certification and solid sides are required or preferred.

Structural Features

- Fully welded construction for strength
- Standard front adjustable heavy-gauge, 10-32 threaded rackrail with numbered rackspace increments speeds equipment mounting
- Finished in a durable black textured powder coat

Thermal Management

- Comes with standard configurable rear door, compatible with optional cooling and filter kits
- Enclosure sides include top and bottom venting
- Solid, plexi, and vented front door options are available
- Vented and fan top options are available

Cable Management

- Multiple lacing points and slotted rail brackets add cable management convenience to ERKs

Regulatory / Certifications

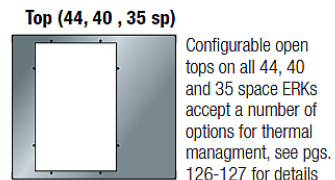
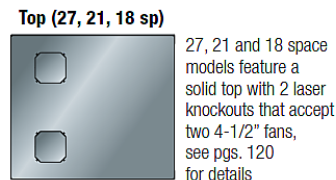
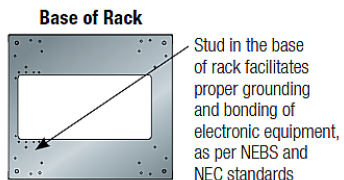
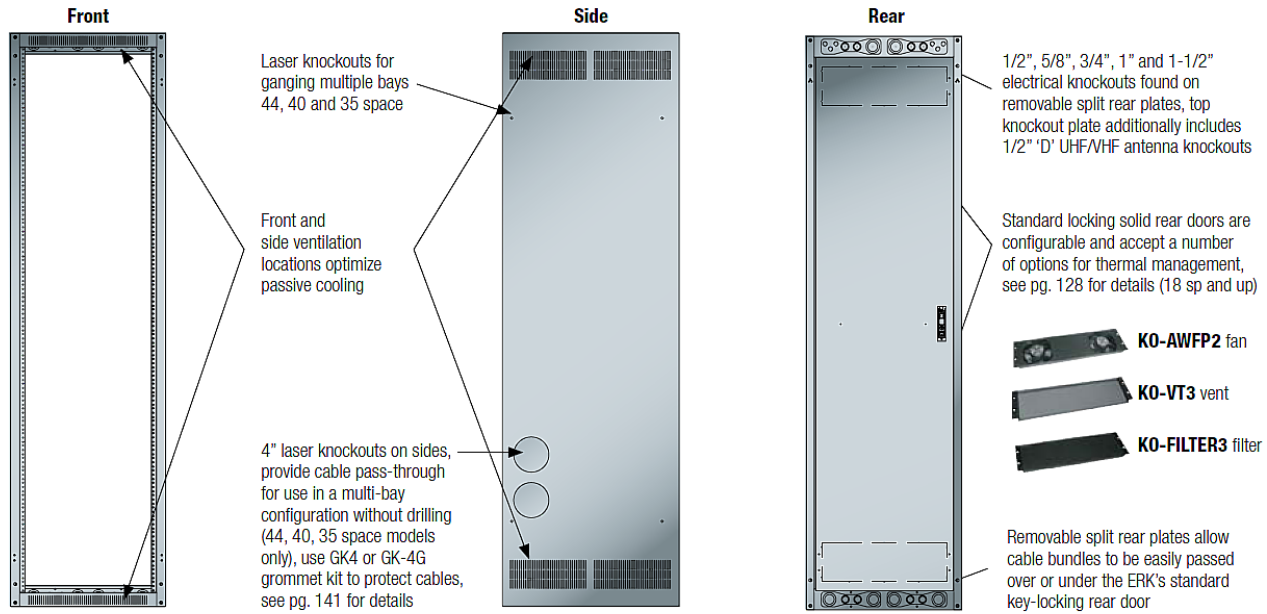
- Static load capacity - 10,000 lbs.
- UL Listed in the US and Canada. UL Listed load capacity - 2,500 lbs.
- Seismic certified to the following codes and standards: 2007 & 2010 CBC; 2006, 2009 & 2012 IBC; ASCE 7-05 (2005 Edition) & ASCE 7-10 (2010 Edition) and the 2006 & 2009 editions of NFPA 5000 for use in areas of high seismicity – Zone 4 or Seismic Design Category (SDC) "D". These are designed for Mission Critical and/ or High-Importance Installations in locations with the highest level of seismicity and top floor or rooftop installations including those within UBC and CBC Essential facilities or IBC, ASCE 7, and NFPA 5000 Seismic Use Group III facilities. For all codes, the Importance factor (I_p) is 1.5. Seismic Certified load capacity of 600 lbs. when used with ERK-Z4 seismic floor anchor brackets.
- GREENGUARD Indoor Air Quality Certified for Children and Schools (the most strict level)

Part #	Racking Height	Overall Height	Useable Depth	Overall Depth	Skirted WheelBase*	Additional Rackrail
ERK-1820	31-1/2" (18 space)	35-5/8"	18-1/2"	20"	CBS-ERK-20	ERK-RR18
ERK-1825	31-1/2" (18 space)	35-5/8"	23-1/2"	25"	CBS-ERK-25	ERK-RR18
ERK-2120	36-3/4" (21 space)	40-7/8"	18-1/2"	20"	CBS-ERK-20	ERK-RR21
ERK-2125	36-3/4" (21 space)	40-7/8"	23-1/2"	25"	CBS-ERK-25	ERK-RR21
ERK-2720	47-1/4" (27 space)	51-3/8"	18-1/2"	20"	CBS-ERK-20	ERK-RR27
ERK-2725	47-1/4" (27 space)	51-3/8"	23-1/2"	25"	CBS-ERK-25	ERK-RR27
ERK-3520	61-1/4" (35 space)	65-3/8"	18-1/2"	20"	CBS-ERK-20	ERK-RR35
ERK-3525	61-1/4" (35 space)	65-3/8"	23-1/2"	25"	CBS-ERK-25	ERK-RR35
ERK-4020	70" (40 space)	74-1/8"	18-1/2"	20"	CBS-ERK-20	ERK-RR40
ERK-4025	70" (40 space)	74-1/8"	23-1/2"	25"	CBS-ERK-25	ERK-RR40
ERK-4420	77" (44 space)	81-1/8"	18-1/2"	20"	CBS-ERK-20	ERK-RR44
ERK-4425	77" (44 space)	81-1/8"	23-1/2"	25"	CBS-ERK-25	ERK-RR44

All models available without rear door, use suffix part # 'LRD'

*Skirted Wheelbase adds 3-3/4"

ERK Series Stand-Alone Gangable Rack Enclosure



Part #	Front Doors			Rear Door	64% Open Top & Bottom	64% Open Area Perf Top	Solid Top	Vented Top	w/ (3) 4-1/2 Fans (285 CFM Total)	Fan Tops	
	Solid	Plexi	VFD- Area Perf							w/ (2) 6" Fans (440 CFM Total)	w/ (1) 10" Fan (550 CFM Total)
ERK-1820	FD-18	PFD-18	VFD- VFD-18	ERK-VRD-18	ERK-LVT	--	--	--	--	--	
ERK-1825	FD-18	PFD-18	VFD- VFD-18	ERK-VRD-18	ERK-LVT	--	--	--	--	--	
ERK-2120	FD-21	PFD-21	VFD- VFD-21	ERK-VRD-21	ERK-LVT	--	--	--	--	--	
ERK-2125	FD-21	PFD-21	VFD- VFD-21	ERK-VRD-21	ERK-LVT	--	--	--	--	--	
ERK-2720	FD-27	PFD-27	VFD- VFD-27	ERK-VRD-27	ERK-LVT	--	--	--	--	--	
ERK-2725	FD-27	PFD-27	VFD- VFD-27	ERK-VRD-27	ERK-LVT	--	--	--	--	--	
ERK-3520	FD-35	PFD-35	VFD- VFD-35	ERK-VRD-35	ERK-LVT	ERK-ST	ERK-VT	ERK-4FT-285CFM	ER-6FT-440CFM	ERK-10FT-550CFM	
ERK-3525	FD-35	PFD-35	VFD- VFD-35	ERK-VRD-35	ERK-LVT	ERK-ST	ERK-VT	ERK-4FT-285CFM	ER-6FT-440CFM	ERK-10FT-550CFM	
ERK-4020	FD-40	PFD-40	VFD- VFD-40	ERK-VRD-40	ERK-LVT	ERK-ST	ERK-VT	ERK-4FT-285CFM	ER-6FT-440CFM	ERK-10FT-550CFM	
ERK-4025	FD-40	PFD-40	VFD- VFD-40	ERK-VRD-40	ERK-LVT	ERK-ST	ERK-VT	ERK-4FT-285CFM	ER-6FT-440CFM	ERK-10FT-550CFM	
ERK-4420	FD-44	PFD-44	VFD- VFD-44	ERK-VRD-44	ERK-LVT	ERK-ST	ERK-VT	ERK-4FT-285CFM	ER-6FT-440CFM	ERK-10FT-550CFM	
ERK-4425	FD-44	PFD-44	VFD- VFD-44	ERK-VRD-44	ERK-LVT	ERK-ST	ERK-VT	ERK-4FT-285CFM	ER-6FT-440CFM	ERK-10FT-550CFM	