

H&I D J V W G Y f J Y g H f i b _ / ' 8 J g h V i H c b ' 7 c b b Y W c f g / Adapters

These are our line of T2 Series 2-Piece Coaxial Hardline Connectors. These aluminum connectors meet industry standards at an affordable price for 75 ohm coaxial CATV distribution cable. These connectors are for both Times Fiber T10 series cable and CommScope P3 series .500 / .625 / .750 cable, as well as many other that meet the same specifications.

RoHS

Common Specifications

Bandwidth: 5 MHz to 1250 MHz

Impedance: 75 Ω

Return Loss: 30 dB

Shielding: 120 dB

Insertion Loss: < 0.2 dB

Thread: 5/8 -24 UNEF

Aluminum: 6061

Finish: Chromatic Acid Anodizing

Pin Length: 2.25"

O Ring: Silicone Rubber

Cable Retentions: 55 lbs (25 kg)

Temperature Range: -40 to 115°F (-40 to 45°C)

T2-500-CH-P3 | T2-625-CH-P3 | T2-750-CH-P3 Male
Pin Type Connector for .500 / .625 / .750 Cable



T3-540-CH-QR
Pin Type Connector for .540 QR



T2-500-SP-P3 | T2-625-SP-P3 | T2-750-SP-P3
Splice Type Connector for .500 | .625 .750 Coax Cable



T2-500-BAFF | T2-625-BAFF | T2-750-BAFF
.500 / .625 / .750 to Female Connector



T2-500-AFM-P3 | T2-625-AFM-P3 | T2-750-AFM-P3
.500 / .625 / .750 to Male Connector



H& & DJYW GYfYg Hfi b_ / 8lgrfVi hcb 7 cbbYVWcfq/Adapters

T2-F-625-CH-T

Male Pin Type to F-Female Adapter



T2-EXT-3.0 | T2-EXT-4.5 | T2-EXT-6.0

3.0" / 4.5" / 6.0" Extension Adapter



T2-CH-BAFF

Pin Type to F-Female Adapter



T2-CH-AFM

Pin Type to Male Adapter

T2-CH-TRM

CH Port Terminator



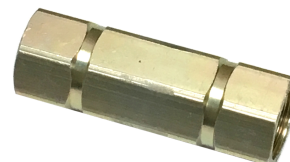
T2-CH-KS-KS-M

CH Port Housing to Housing Adapter



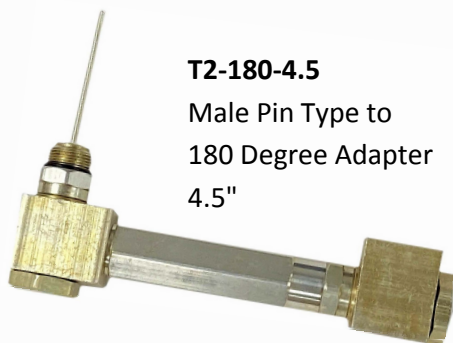
T2-KS-KS-F

Female KS to KS Adapter



T2-180-4.5

Male Pin Type to
180 Degree Adapter
4.5"



T2-90-T

Male Pin Type to
90 Degree KS Adapter

